



MEDICAL



PRESSURE REDUCING VALVE 25E WITH SNAP ADJUSTMENT AND RESIDUAL SYSTEM

Series RO.165



Reducing valve with snap adjustment 0-15 lt/min for oxygen therapy use, balanced piston reducer included, with adjustable hose holder and residual system. Available with integrated AFNOR/UNI socket.



SAFETY DEVICES

- Overpressure valve
- (on request: Non-return valve on load connection)
- Residual system (approx. 3 bar)
- Protective cover (accessory)
- Single unit test
- Sintered filter

SERVICE LIFE

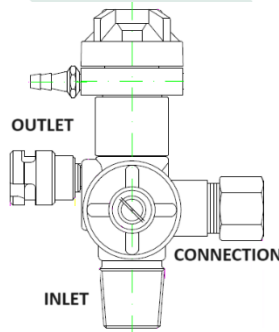
10 years from manufacture.

DOCUMENTATION

Declaration of Conformity and Instructions for Use.

TRACEABILITY

Serial number marked on the valve body.



REFERENCE LEGISLATIVE STANDARDS

π1370 Directive 2010/35/EU
 CE₀₁₂₃ Council Directive 93/42/EEC
 Class IIB

TECHNICAL STANDARDS OF REFERENCE

EN 10524-3

TECHNICAL SPECIFICATIONS

PERFORMANCE

Gas Medical Oxygen
 Inlet pressure 230 bar (on request 300 bar)
 Outlet pressure 4 bar

- Flow rate 0-15 lt/min
- Flow steps 1-1,5-2-3-4-6-9-12-15
- Flow rate 0-6 lit/min (a rich.)
- Flow steps 0,5-1-1,5-2-2,5-3-4-5-6

Accuracy range +10% o + 0,5 lt/min.
 Operating temperature -20° C +50

MATERIALS

Body CW617N-UNI EN 12165
 (Chrome plate brass)
 Piston Brass and P.A. 66

GAUGES

Full-scale 0-315 Bar
 Diameter 40 mm
 Fitting 1/8" G.C
 (flat on request)

CONNECTIONS

Inlet 25 E
 Outlet hose connector 6 mm
 Filling fitting UNI 11144/2 (med. oxygen)

DIMENSIONS AND WEIGHT

Dimension 100x125x80 mm.
 Weight 1 kg

ACCESSORY DEVICES

- Protective cover (Cap, Universal) compliant with drop test EN 10524-3
- Ring for cylinders, capacity 1-2-3 liters.
- Stretcher hook.
- Filling adapters (not required if non-return valve is not installed).
- UNI or AFNOR DIN low pressure socket. Seal cap.

Code	Description	Inlet	Outlet	Connection	Flow capacity	Gas
RO.165.12297UNI	GRUPPO 25E PORT. GOMMA 0-6 L/min	25E	PG	UNI	0-6L/m	O2
RO.165.12295	GROUP 25E PORT. O-SOCKET UNI 0-15 L/min	25E	PG	UNI	0-15L/m	O2
RO.165.12295UNI	GROUP 25E PORT. ORIENT UNI 0-15 L/min	25E	PG	UNI	0-15L/m	O2
RO.165.12295AF	GROUP 25E PORT. O-SOCKET AFNOR 0-15 L/min	25E	AFNOR PG	UNI	0-15L/m	O2
RO.165.12295NF	GROUP 25E PORT. ORIENT NF 0-15 L/min	25E	PG	NF	0-15L/m	O2
RO.165.12295NFNF	GROUP 25E PORT. ORIENT NF 0-15 L/min. OUT NF	25E	AFNOR PG	NF	0-15L/m	O2
RO.165.12295DIN6	GROUP 25E PORT. ORIENT DIN6 0-15 L/min	25E	PG	DIN6	0-15L/m	O2
RO.165.12296DIN	GROUP 25E P.OR. WITH P/AFNOR 0-30L/min	25E	AFNOR PG	DIN	0-3lt/m	O2
RO.165.12296NF	GROUP 25E P.OR. WITH PRE NF 0-24 L/min	25E	AFNOR PG	NF	0-24 Lt	O2
RO.165.12296UNI	GROUP 25E P.OR. WITH P/AFNOR 0-30L/min	25E	AFNOR PG	UNI	0-3lt/m	O2
RO.165.12295USA	GROUP 3/4UNF PORT. ORIENT UNI 0-15 L/min	3/4UNF	PG	UNI	0-15L/m	O2
CO.100.10639	ADAPTER FOR FUTURA RES O2-CO2 UNI	UNI 2	0,00	0	0,0	O2 CO2
CO.100.10655	ADAPTER FOR RESIDUAL GROUPS O2 NF	NF B	0,00	0	0,0	O2
CO.100.18080	SEAL FOR GROUP HOSE HOLDER	0,00	0,00	0	0,0	0

PRESSURE REDUCING VALVE 17E WITH SNAP ADJUSTMENT AND RESIDUAL SYSTEM

Series RO.165



Reducing valve with snap adjustment 0-15 lt/min for oxygen therapy use, balanced piston reducer included. Adjustable hose holder and residual system. Available with integrated AFNOR/UNI socket.



SAFETY DEVICES

Overpressure valve
(on request: Non-return valve on load connection)
Protective cover (accessory)

Single unit test
Sintered filter

SERVICE LIFE

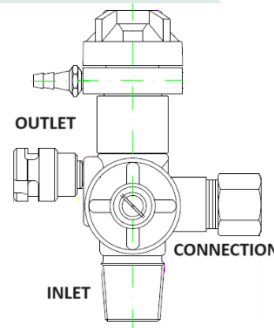
10 years from manufacture.

DOCUMENTATION

Declaration of Conformity and Instructions for Use.

TRACEABILITY

Serial number marked on the valve body.



REFERENCE LEGISLATIVE STANDARDS

π1370 Directive 2010/35/EU
CE0123 Council Directive 93/42/EEC
Class IIB

TECHNICAL STANDARDS OF REFERENCE

EN 10524-3

TECHNICAL SPECIFICATIONS

PERFORMANCE

Gas Medical Oxygen
Inlet pressure 230 bar (on request 300 bar)
Outlet pressure 4 bar

- Flow rate 0-15 lt/min
- Flow steps 1-1,5-2-3-4-6-9-12-15
- Flow rate 0-6 lit/min (a rich.)
- Flow steps 0,5-1-1,5-2-2,5-3-4-5-6

 Operating temperature -20° C +50

MATERIALS

Body CW617N-UNI EN 12165
(Chrome plate brass)
Piston Brass and P.A. 66

GAUGES

Full-scale 0-315 Bar
Precision class 2.5
Diameter 40 mm
Fitting 1/8" G.C
(flat on request)

CONNECTIONS

Inlet 17E
Outlet Hose connector 6 mm
Filling fitting UNI 11144/2 (med. oxygen)

DIMENSIONS AND WEIGHT

Dimension 100x125x120 mm.
Weight 1,2 kg

ACCESSORY DEVICES

Protective cover (Cap, Universal)
Ring for cylinders capacity 1-2-3 lt. Hook for stretcher.
Filling adapters (not required if non-return valve is not installed).
UNI or AFNOR low pressure socket. Seal cap.

Code	Description	Inlet	Outlet	Connection	Flow capacity	Gas
RO.165.12294UNI	GROUP 17E PORT. ORIENT UNI 0-15 L/min	17E	PG	UNI	0-15L/m	O2
RO.165.12294NF	GROUP 17E PORT. ORIENT NF 0-15 L/min	17E	PG	NF	0-15L/m	O2
RO.165.12294DIN	GROUP 17E PORT. ORIENT DIN 0-15 L/min	17E	PG	DIN	0-15L/m	O2
RO.165.12294DIN6	GROUP 17E PORT. ORIENT DIN6 0-15 L/min	17E	PG	DIN6	0-15L/m	O2
RO.165.12295NFN F	GROUP 25E PORT. ORIENT NF 0-15 L/min OUT NF	25E	AFNOR PG	NF	0-15L/m	O2
RO.165.12298UNI	GROUP 17E PORT. ORIENT UNI 0-30L/min UNI PG	17E	UNI	UNI	0-3lt/m	O2
RO.165.12298NF	GROUP 17E PORT. ORIENT UNI 0-30L/min AFNOR PG	17E	AFNOR PG	UNI	0-3lt/m	O2
RO.165.12298AF	GROUP 17E PORT. ORIENT AFNOR 0-30L/min AFNOR PG	17E	AFNOR PG	NF	0-3lt/m	O2
RO.165.12293UNI	GROUP 17E PORT. ORIENT UNI 0-3L/min	17E	PG	UNI	0-3lt/m	O2
CO.100.10639	ADAPTER FOR FUTURA RES O2-CO2 UNI	UNI 2	0,00	0	0,0	O2 CO2
CO.100.18080	SEAL FOR GROUP HOSE HOLDER	0,00	0,00	0	0,0	0

PROTECTIVE COVERS FOR SNAP-ON REDUCING VALVE 25E

Series CO.100



TECHNICAL STANDARDS OF REFERENCE
EN ISO 11117

TECHNICAL SPECIFICATIONS

MATERIAL

Body material Nylon

CONNECTIONS

Connection to the cylinder via 5 stainless steel screws

ADAPTABILITY

To all cylinders with a capacity of 0.5 -14 liters

VERSIONS

Universal black cap cover. Customizable color and label.

SAFETY

Drop Test: EN ISO 11117

ACCESSORY DEVICES

Stretcher hook

ABS ring

Protective cover that protects the valve group, ensuring maximum safety during transport and in case of cylinder falls. For cylinders with a capacity of 0,5-14 lt, supplied with ring.

Code	Description
CO.100.18065NEW	COVER X GRUPPO NEW BLACK
2107A	CYLINDER RING NUT Ø TO SIZE FOR COP. TULIP

PROTECTIVE COVER FOR SNAP-ON REDUCING VALVE 17E

Series CO.100.18120 – 18121



Series CO.100.18125- 18126



TECHNICAL REFERENCE STANDARDS

EN ISO 11117

TECHNICAL FEATURES

MATERIALS

Body

Nylon

CONNECTION

To the cylinder via 5 stainless steel screws

DIMENSIONS and WEIGHT

Dimension

Ø 118 mm

Height

150 mm

ADAPTABILITY

For all cylinders with capacity between 0,5 – 14.

VERSIONS

White or black goblet cover.

Customizable color and label.

SAFETY

Drop Test: EN ISO 11117

ACCESSORY DEVICES

Stretcher hook

ABS ring

Seal

Protective cover that protects the valve group, ensuring maximum safety during transport and in case of cylinder falls.

This cover is for cylinders with a capacity of 0,5 -7 lt and it can be with or without collar.



Code	Description
CO.100.18120	CHALICE COVER G.SCATTO PORT. ORIE. BLACK
CO.100.18121	CHALICE COVER G.SCATTO Ø 14PORT. ORIE. BIAN
CO.100.18125	CAL COVER. Ø .118 G.SCATTO WHITE
CO.100.18126	CAL COVER. D.118 G.SCATTO BLACK
CO.100.18130	STRETCHER HOOK x SNAP GROUP COVER
CO.100.10639	ADAPTER FOR FUTURA RES O2-CO2 UNI
CO.100.18080	SEAL FOR GROUP HOSE HOLDER



Code	Description	Price list
CO.400.18021	OXYGEN THERAPY MASK WITH TUBE	3,70

MEDICAL GAS CYLINDERS O2 THERAPY COMPLETE WITH SNAP REDUCER VALVE, COVER, MASK AND CASE

Series BO.100



REFERENCE LEGISLATIVE STANDARDS

π1370

Directive 2010/35/EU

D.M. transport 03/01/1990

TECHNICAL STANDARDS OF REFERENCE

EN ISO 9809-1

TECHNICAL FEATURES

PERFORMANCE

Gas Medical Oxygen
Test operating pressure 200/300 bar

MATERIALS

Body Steel 35 CrMo4 (UNI 7845)

CAPACITY

Liters 1 – 7

CONNECTIONS

Outlet 17 E / 25 E

ACCESSORIES

Stainless steel discs for medical use
Reducing valve with snap adjustment protective cap cover

OPTIONAL EXTRAS

Hard case (cylinders 5, 7 lt)
Transport bag (cylinders 1, 2, 3 lt)
High residual pressure valve mod. FUTURA
Pin Index high pressure valve

DOCUMENTATION

Declaration of Conformity and Instructions for Use

Cylinders for domestic, hospital and emergency room oxygen therapy use. They are supplied including a snap-on reduction valve, mask and suitable protective covers.

Code	Description	Inlet	outlet	Liters	Gas	flow capacity	Gas
BO.100.15011	MED COM ALUM 200 UNI GROUP PG 1L 17E WHITE TPED	17E	PG	1	O2	0-15L/m	O2
BO.100.15012	MED COM STEEL 200 UNI GROUP PG 2L 25E WHITE TPED	25E	PG	2	O2	0-15L/m	O2
BO.100.15013	MED COM STEEL 200 UNI GROUP PG 3L 25E WHITE TPED	25E	PG	3	O2	0-15L/m	O2
BO.100.15015	MED COM STEEL 200 UNI GROUP PG 5L 25E WHITE TPED	25E	PG	5	O2	0-15L/m	O2
BO.100.15017	MED COM STEEL 200 UNI GROUP PG 7L 25E WHITE TPED	25E	PG	7	O2	0-15L/m	O2
BO.100.15012NF	MED COM STEEL 200 AFNOR GROUP PG 2L 25E WHITE TPED	25E	PG	2	O2	0-15L/m	O2
BO.100.15013NF	MED COM STEEL 200 AFNOR GROUP PG 3L 25E WHITE TPED	25E	PG	3	O2	0-15L/m	O2
BO.100.15015NF	MED ALUM 200 AFNOR GROUP PG 5L 25E WHITE TPED	25E	PG	5	O2	0-15L/m	O2
CO.100.10639	ADAPTER FOR FUTURA RES O2-CO2 UNI	UNI 2	0,00		O2 CO2		O2 CO2
CO.100.10655	ADAPTER FOR RESIDUAL GROUPS O2 NF	NF B	0,00		O2		O2
CO.100.18080	SEAL FOR GROUP HOSE HOLDER	0,00	0,00				

MEDICAL GAS CYLINDERS WITH SNAP ADJUSTMENT REDUCING VALVE AND PROTECTION CAP

Series BO.100



Cylinders for domestic, hospital and emergency room oxygen therapy use. They are supplied with a snap-on reduction valve and suitable protection covers.



REFERENCE LEGISLATIVE STANDARDS

π1370

Directive 2010/35/EU
D.M. transport 03/01/1990

TECHNICAL STANDARDS OF REFERENCE

EN ISO 9809-1

TECHNICAL FEATURES

PERFORMANCE

Gas Medical oxygen
Test operating pressure 200/300 bar

MATERIALS

Body Steel 35 CrMo4 (UNI 7845)

CAPACITY

Liters 0,5 – 14

CONNECTIONS

Outlet 17 E / 25 E

ACCESSORIES

Stainless steel disks for medical use
Reducing valve with snap adjustment protective cap cover

OPTIONAL EXTRAS

Hard case (cylinders 5, 7 lt)
Transport case (cylinders 1, 2, 3 lt)
Protective goblet cover
Plug

DOCUMENTATION

Declaration of Conformity and instructions for Use

Code	Description	Inlet	outlet	Liters	Gas	flow capacity	Gas
BO.110.15026	MED ALUM 200 UNI GROUP PG 15 0,5L 17E WHITE TPED	17E	PG 15	0.5	O2	0-15L/m	O2
BO.110.15026NF	MED ALUM 200 AFNOR GROUP PG 15 0,5L 17E WHITE TPED	17E	PG 15	0.5	O2	0-15L/m	O2
BO.110.15021	MED ALUM 200 UNI GROUP PG 15 1L 17E WHITE TPED	17E	PG 15	1	O2	0-15L/m	O2
BO.110.15021NF	MED ALUM 200 AFNOR GROUP PG 15 1L 17E WHITE TPED	17E	PG 15	1	O2	0-15L/m	O2
BO.110.15022	MED STEEL 200 UNI GROUP PG 15 2L 25E WHITE TPED	25E	PG 15	2	O2	0-15L/m	O2
BO.110.15022NF	MED STEEL 200 AFNOR GROUP PG 15 2L 25E WHITE TPED	25E	PG 15	2	O2	0-15L/m	O2
BO.110.15023	MED STEEL 200 UNI GROUP PG 15 3L 25E WHITE TPED	25E	PG 15	3	O2	0-15L/m	O2
BO.110.15023NF	MED STEEL 200 AFNOR GROUP PG 15 3L 25E WHITE TPED	25E	PG 15	3	O2	0-15L/m	O2
BO.110.15025	MED STEEL 200 UNI GROUP PG 15 5L 25E WHITE TPED	25E	PG 15	5	O2	0-15L/m	O2
BO.110.15025NF	MED STEEL 200 AFNOR GROUP PG 15 5L 25E WHITE TPED	25E	PG 15	5	O2	0-15L/m	O2
BO.110.15027	MED STEEL 200 UNI GROUP PG 15 7L 25E WHITE TPED	25E	PG 15	7	O2	0-15L/m	O2
BO.110.15027NF	MED STEEL 200 AFNOR GROUP PG 15 7L 25E WHITE TPED	25E	PG 15	7	O2	0-15L/m	O2
BO.110.15018	MED STEEL 200 UNI GROUP PG 15 10L 25E WHITE TPED	25E	PG 15	10	O2	0-15L/m	O2
BO.110.15020	MED STEEL 200 UNI GROUP PG 15 14L 25E WHITE TPED	25E	PG 15	14	O2	0-15L/m	O2
BO.110.15020NF	MED STEEL 200 AFNOR GROUP PG 15 14L 25E WHITE TPED	25E	PG 15	14	O2	0-15L/m	O2

Code

Description

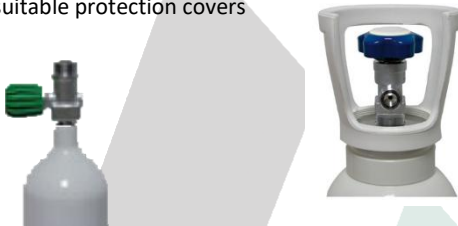
CO.400.18021 OXYGEN THERAPY MASK WITH TUBE

MEDICAL GAS CYLINDERS WITH VALVE AND ABS PROTECTIVE CAP

Series BO.100



Cylinders for domestic, hospital and emergency room oxygen therapy use. They are supplied including a snap-on reduction valve and suitable protection covers



REFERENCE LEGISLATIVE STANDARDS

π1370

T-PED Directive 2010/35/EU

D.M. transport 03/01/1990

TECHINICAL STANDARDS OF REFERENCE

EN ISO 9809-1

TECHNICAL FEATURES

PERFORMANCE

Gas

Medical oxygen

Test operating pressure

200/300 bar

MATERIALS

Body

Steel 35 CrMo4 (UNI 7845)

CAPACITY

Litres

0,5 – 50

CONNECTIONS

Outlet

17 E / 25 E

ACCESSORIES

Stainless steel disks for medical use

OPTIONAL EXTRAS

Hard case (cylinders 5, 7 lt)

Transport bag (cylinders 1, 2, 3 lt)

High residual pressure valve mod. FUTURA

Pin Index high pressure valve

Goblet protective cover

Universal protection cover

DOCUMENTATION

Declaration of conformity and instructions for use

Code	Description	Inlet	outlet	Liters	Ø outside	Gas
BO.100.15029	MED ALUM 200 UNI VALVE OXIGEN 0,5L 17E WHITE TPED	17E	UNI	0,5	70 mm	O2
BO.100.15031	MED ALUM 200 UNI VALVE OXIGEN 1L 17E WHITE TPED	17E	UNI	1,0	102 mm	O2
BO.100.15032	MED STEEL 200 UNI VALVE OXIGEN 2L 25E WHITE TPED	25E	UNI	2,0	114 mm	O2
BO.100.15033	MED STEEL 200 UNI VALVE OXIGEN 3L 25E WHITE TPED	25E	UNI	3,0	114 mm	O2
BO.100.15035	MED STEEL 200 UNI VALVE OXIGEN 5L 25E WHITE TPED	25E	UNI	5,0	140 mm	O2
BO.100.15037	MED STEEL 200 UNI VALVE OXIGEN 7L 25E WHITE TPED	25E	UNI	7,0	140 mm	O2
BO.100.15038	MED STEEL 200 UNI VALVE OXIGEN 10L 25E WHITE TPED	25E	UNI	10,0	140 mm	O2
BO.100.15039	MED STEEL 200 UNI VALVE OXIGEN 14L 25E WHITE TPED	25E	UNI	14,0	168 mm	O2
BO.100.15040	MED STEEL 200 UNI VALVE OXIGEN 20L 25E WHITE TPED	25E	UNI	20,0	203 mm	O2
BO.100.15041	MED STEEL 200 UNI VALVE OXIGEN 40L 25E WHITE TPED	25E	UNI	40,0	203 mm	O2
BO.100.15042UNI	MED STEEL 200 UNI VALVE OXIGEN 50L 25E WHITE TPED	25E	UNI	50,0	229 mm	O2
BO.100.15042UNI300	MED STEEL 300 ISO VALVE OXIGEN 50L 25E WHITE TPED	25E	UNI	50,0	229 mm	O2

To be combined with RO.200 RO.300



ACCESSORIES FOR CYLINDERS

HARD CASE FOR TRANSPORTING CYLINDERS



Code	Description
CO.100.18041	CYLINDER CASE L.5
CO.100.18042	CYLINDER CASE L.7

SOFT CASE FOR TRANSPORTING CYLINDERS



Code	Description
CO.100.18040	CYLINDER CASE L.1-2-
CO.100.18043	BAG L.3 length 65 cm

STAINLESS STEEL DISKS FOR MEDICAL USE



Code	Description
2105	CONICAL STAINLESS STEEL DISKETTE FOR MEDICAL
2106	STAINLESS STEEL FLAT DISKETTE FOR MEDICAL
2106F	STAINLESS STEEL FLAT DISK FOR MED. WITH HOLE
2106FP	STAINLESS DISKETTE AND HOLE X MED. WITH VAT
2106P	STAINLESS STEEL DISKETTE FOR MED. WITH VAT

SEAL CAP FOR DOSING VALVE GROUP



Code	Description
CO.100.18080	SEAL FOR GROUP HOSE HOLDER

REDUCER FOR OXYGEN THERAPY WITH HOSE OUTLET

WITH PRE-CALIBRATED FLOW TO 6L

Series RO.200

UNI SHORT SIDE CONNECTION



Extremely compact pressure reducer with balanced piston with fixed flow rate of 6 l/min.

LATERAL CONNECTION

Connection DIN



AFNOR



PIN INDEX



REFERENCE LEGISLATIVE STANDARDS

CE0123 Council Directive 93/42/EEC
Class IIB

TECHNICAL STANDARDS OF REFERENCE

UNI EN 10524-1

TECHNICAL FEATURES

PERFORMANCE

Gas Medical Oxygen
Inlet pressure 230 bar
Flow 6 l/min
Operating temperature -20° C +50° C

MATERIALS

Body Chrome-plated brass
Reducing piston Brass and P.A.6.6

GAUGE

Full scale 0-315 Bar
Accuracy class 2.5
Diameter 40 mm.
Fitting 1/8" G.C

CONNECTIONS

Outlet Hose outlet 6 mm.
Inlet UNI 11144/2, AFNOR, DIN, PIN INDEX, BS, CGA H12X1

DIMENSION AND WEIGHT

Dimension 125 x 100 mm.
Weight 0,560 kg

SAFETY DEVICES

Overpressure valve
Single unit test
Sinter filter

TRACEABILITY

Serial number stamped on the valve body

LIFETIME OF THE PRODUCT

10 years from product manufacturing

DOCUMENTATION

Declaration of conformity and Instructions for Use

Code	Description	Inlet	Outlet	Flow capacity	Gas
RO.200.12246UNI	SECOR O2 UNI REDUCER 0-6 L/min	UNI 2	PG	0-6L/m	O2
RO.200.12246NF	SECOR O2 NF REDUCER 0-6 L/min	NF B	PG	0-6L/m	O2
RO.200.12246DIN	SECOR O2 DIN REDUCER 0-6 L/min	DIN	PG	0-6L/m	O2
RO.200.12246PIN	SECOR O2 PIN-INDEX REDUCER 0-6 L/min	PIN INDEX	PG	0-6L/m	O2
RO.200.12246BS	REDUCER SECOR O2 BS 0-6 L/min	BS 3	PG	0-6L/m	O2
RO.200.12246CGA	SECOR O2 CGA REDUCER 0-6 L/min	CGA	PG	0-6L/m	O2
RO.200.12246H12X1	SECOR O2 12X1 0-6 L/min REDUCER	H12X1	PG	0-6L/m	O2

PRECALIBRATED OXYGEN THERAPY REDUCER WITH 4 BAR HOSE CONNECTION

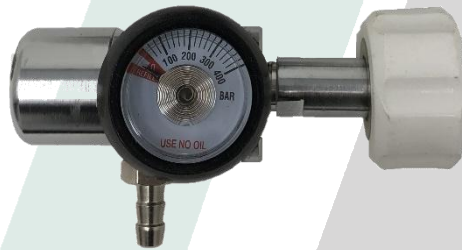
Series RO.200

LATERAL CONNECTION

LATERAL CONNECTION



IN-LINE CONNECTION



Extremely compact piston pressure reducer with fixed calibration, suitable for powering ambulance systems or medical equipment.

DIN connection 95MM

AFNOR Connection



REFERENCE LEGISLATIVE STANDARDS

CE0123 Council Directive 93/42/EEC
Class IIB

TECHNICAL STANDARDS OF REFERENCE

UNI EN 10524-1

TECHNICAL FEATURES

PERFORMANCE

Gas Medical Oxygen
Inlet pressure 230 bar
Outlet pressure Precalibrated max 4 bar
Operating temperature -20° C +50° C
Flow 70 lt/min

MATERIALS

Body Chrome-plated brass
Reducing piston Brass and PA66

GAUGE

Full scale 0-315 Bar
Accuracy class 2.5
Diameter 40 mm.
Fitting 1/8" G.C

CONNECTIONS

Outlet connection Hose outlet 6 mm.
Inlet connection UNI 11144/2

DIMENSION

Dimension 125 x 100 mm.
Weight 0,560 kg

SAFETY DEVICES

Overpressure valve
Single unit test
Sinter filter

TRACEABILITY

Serial number stamped on the valve body

LIFETIME OF THE PRODUCT

10 years from product manufacturing

DOCUMENTATION

Declaration of Conformity and Instructions for Use

Code	Description	Inlet	Outlet	Max outlet pressure	Gas
RO.200.12241UNI	SECOR O2 UNI PG REDUCER	UNI	PG	4	O2
RO.200.12241NF	SECOR O2 NF PG REDUCER	NF B	PG	4	O2
RO.200.12241DIN	SECOR O2 DIN PG REDUCER	DIN	PG	4	O2
RO.200.12241DIN6	SECOR O2 DIN6 PG REDUCER	DIN6	PG	4	O2
RO.200.12241PIN	SECOR O2 PIN INDEX PG REDUCER	PIN	PG	4	O2

IN-LINE CONNECTION

Code	Description	Inlet	Outlet	Max outlet pressure	Gas
RO.200.12242UNI	SECOR O2 UNI PG REDUCER	UNI	PG	4	O2
RO.200.12242BS	SECOR O2 BS PG REDUCER	BS 3	PG	4	O2
RO.200.12242DIN	SECOR O2 DIN PG REDUCER	DIN	PG	4	O2
RO.200.12242DIN6	SECOR O2 DIN6 PG REDUCER	DIN6	PG	4	O2
RO.200.12242NF	SECOR O2 NF PG REDUCER	NF B	PG	4	O2
RO.200.12242PIN	SECOR O2 PIN INDEX PG REDUCER	PIN INDEX	PG	4	O2

PRECALIBRATED OXYGEN THERAPY REDUCER WITH 4 BAR AFNOR CONNECTION

Series RO.202

SIDE CONNECTION



IN-LINE CONNECTION



OUTLET AFNOR SOCKET

Extremely compact and balanced piston pressure reducer with fixed calibration, suitable for powering ambulance systems or medical equipment.

PIN CONNECTION OUTLET AFNOR



DIN Connection



AFNOR Connection



REFERENCE LEGISLATIVE STANDARDS

CE0123

Council Directive 93/42/EEC

Class

IIB

TECHNICAL STANDARDS OF REFERENCE

UNI EN 10524-1

TECHNICAL FEATURES

PERFORMANCE

Gas	Medical Oxygen
Inlet pressure	230 bar
Outlet pressure	Precalibrated max 4 bar
Operating temperature	-20° C +50°C
Flow	70 lt/min

MATERIALS

Body	Chrome-plated brass
Reducing piston	Brass and P.A.6.6

GAUGE

Full scale	0-315 Bar
Accuracy class	2.5
Diameter	40 mm.
Fitting	1/8" G.C

CONNECTIONS

Outlet connection	Hose outlet 6 mm.
Inlet connection	UNI 11144/2

DIMENSION

Dimension	125 x 100 mm.
Weight	0,560 kg

SAFETY DEVICES

- Overpressure valve
- Single unit test
- Sinter filter

TRACEABILITY

Serial number stamped on the valve body

LIFETIME OF THE PRODUCT

10 years from product manufacturing

DOCUMENTATION

Declaration of Conformity and Instructions for Use.

LATERAL CONNECTION

Code	Description	Inlet	Outlet	Gas
RO.202.12241UNI	SECOR O2 + AFNOR REDUCER	UNI	AFNOR	O2
RO.202.12241NF	SECOR O2 + AFNOR REDUCER	NF B	AFNOR	O2
RO.202.12241DIN	SECOR O2 + AFNOR REDUCER	DIN	AFNOR	O2
RO.202.12241DIN6	SECOR O2 + AFNOR REDUCER	DIN6	AFNOR	O2

IN-LINE CONNECTION

Code	Description	Inlet	Outlet	Gas
RO.202.12242BS	SECOR O2 BS PG REDUCER	BS 3	AFNOR	O2
RO.202.12242DIN	SECOR O2 DIN PG REDUCER	DIN	AFNOR	O2
RO.202.12242DIN6	SECOR O2 DIN6 PG REDUCER	DIN6	AFNOR	O2
RO.202.12242NF	SECOR O2 NF PG REDUCER	NF B	AFNOR	O2
RO.202.12242PIN	SECOR O2 PIN INDEX PG REDUCER	PIN INDEX	AFNOR	O2
RO.202.12242UNI	SECOR O2 UNI PG REDUCER	UNI	AFNOR	O2

REDUCER FOR MEDICAL GASES, BREATHABLE AIR, NITROUS OXIDE AND CARBON DIOXIDE

Series RO.200

OUTLET PG RO.200



AFNOR CONNECTION RO.202



OUTLET DIN PG RO.201



PIN INDEX INLET, DIN OUTLET RO203



Extremely compact pressure reducer with balanced piston and fixed calibration suitable for powering ambulance systems or medical equipment.

LEGISLATIVE STANDARDS OF REFERENCE

CE0123 Council Directive 93/42/EEC
Class IIB

TECHNICAL STANDARDS OF REFERENCE

UNI EN 10524-1

TECHNICAL FEATURES

PERFORMANCE

Gases: Nitrogen, Breathing air, Nitrous oxide, Carbon dioxide
Inlet pressure 230 bar
Outlet pressure Precalibrated max 4 bar
Operating temperature -20° C +50° C
Flow 70 L min

MATERIALS

Body Chrome-plated brass
Reducing piston Brass and PA6.6

GAUGE

Full scale 0-315 Bar
Accuracy class 2.5
Diameter 40 mm.
Fitting 1/8" G.C

CONNECTIONS

Outlet connection Hose outlet 6 mm.
Inlet connection UNI 11144/2

DIMENSION and WEIGHT

Dimension 125 x 100 mm.
Weight 0,560 kg

SAFETY DEVICES

Overpressure valve
Single unit test
Sinter filter

TRACEABILITY

Serial number stamped on the valve body

LIFETIME OF THE PRODUCT

10 years from product manufacturing

DOCUMENTATION

Declaration of conformity and instructions for use.

LATERAL CONNECTION

Code	Description	Inlet	Outlet	Gas
RO.200.12245DIN	SECOR AIR REDUCER MEDICAL DIN	DIN	PG	ARIA
RO.200.12245PIN	SECOR ARIA PIN INDEX REDUCER	PIN	PG	ARIA
RO.200.12245UNI	SECOR ARIA UNI REDUCER	UNI	PG	ARIA
RO.200.12245NF	SECOR ARIA UNI REDUCER	NF B	PG	ARIA
RO.200.12248DIN	SECOR CO2 MED DIN PG REDUCER	DIN	PG	CO2 MED
RO.200.12248PIN	SECOR CO2 MED PIN PG REDUCER	PIN	PG	CO2 MED
RO.200.12248UNI	SECOR CO2 MED UNI PG REDUCER	UNI	PG	CO2 MED
RO.200.12248NF	SECOR CO2 MED NF PG REDUCER	AFNOR	PG	CO2 MED
RO.200.12247DIN	SECOR N2O UNI REDUCER	DIN	PG	N2O
RO.200.12247PIN	SECOR N2O UNI REDUCER	PIN	PG	N2O
RO.200.12247UNI	SECOR N2O UNI REDUCER	UNI	PG	N2O
RO.200.12247NF	SECOR N2O UNI REDUCER	AFNOR G	PG	N2O

BALANCED PISTON REDUCER WITH FLOW METER 0-6L 0-15L

Series RO.200



Balanced piston pressure reducer with continuous flow regulation.



SAFETY DEVICES

Overpressure valve
Single unit test
Sinter filter

TRACEABILITY

Serial number stamped on the valve body

LIFETIME OF THE PRODUCT

10 years from product manufacturing

DOCUMENTATION

Declaration of Conformity and Instructions for Use.

REFERENCE LEGISLATIVE STANDARDS

CE0123
Class

Council Directive 93/42/EEC
IIB

TECHICAL STANDARDS OF REFERENCE

UNI EN 10524-1

TECHNICAL FEATURES

PERFORMANCE

Gas	Medical Oxygen
Inlet pressure	230 bar (upon request 300 bar)
Outlet pressure	4 bar
Flow rate	0-6 lit/min
Flow rate	0-15 lit/min
Precision	+10% o +- 0,5 lt/min
Operating temperature	-20° C +50°C

MATERIALS

Body	Chrome-plated brass
Reducing piston	Brass and P.A.6.6
Column	Polyacrylic shock-proof

GAUGE

Full scale	0-315 Bar
Accuracy class	2.5
Diameter	50 mm.
Connection	1/8" G.C

CONNECTIONS

Outlet	9/16" with nut and hose holder 6 mm
Inlet	UNI 11144/2, BS, DIN, AFNOR, PIN UK, CGA

DIMENSIONS AND WEIGHT

Dimension	170 x 100 x 110 mm.
Weight	1,0 kg

Code	Description	Inlet	Outlet	Flow capacity	Gas
RO.200.12215	PIST REDUCER. C/FLUSS.0-15L/min 9/16UNF	UNI	PG	0-15L/m	O2
RO.200.12215BS	PIST REDUCER. C/FLUSS.0-15L/min 9/16 BS	BS 3	PG	0-15L/m	O2
RO.200.12215DIN	PIST REDUCER. C/FLUS.0-15L/min 9/16 DIN	DIN	PG	0-15L/m	O2
RO.200.12215NF	PIST REDUCER. C/FLU.0-15L/min 9/16 NF	NF B	PG	0-15L/m	O2
RO.200.12215PIN	Rid. PIST. C/FLU. PIN INDEX .0-15L/min 9/16	PIN	PG	0-15L/m	O2
RO.200.12215DOPPIO	PISTON REDUCER WITH DOUBLE FLUSS.	UNI	PG	0-15L/m	O2
RO.200.12213	PIST REDUCER. C/FLUSS. 0-6L/min 9/16UNF	UNI	PG	0-6L/m	O2
RO.200.12213BS	PIST REDUCER. C/FLUSS. 0-6L/min 9/16UNF	BS 3	PG	0-6L/m	O2
RO.200.12213DIN	PIST REDUCER. C/FLUSS. 0-6L/min 9/16UNF	DIN	PG	0-6L/m	O2
RO.200.12214BS	PIST REDUCER. C/FLUSS.0-15L/min UMID.BS	BS 3	PG	0-15L/m	O2
RO.200.12214CGA	PIST REDUCER. C/FLU.0-15L/minUMIDIF.CGA	CGA	PG	0-15L/m	O2
RO.200.12214DIN	PIST REDUCER. C/FLU.0-15L/minUMIDIF.DIN	DIN	PG	0-15L/m	O2
RO.200.12214NF	REDUCER PIS. C/FLUSS.0-15L/minUMIDIF.NF	NF B	PG	0-15L/m	O2
RO.200.12214PIN	PIST REDUCER. PINIDEX C/FL 0-15 UMIDIF	PIN INDEX	PG	0-15L/m	O2
RO.200.12214UNI	PIST REDUCER. C/FLUSS. 0-15 UMIDIF UNI	UNI	PG	0-15L/m	O2

PRESSURE REDUCER WITH SNAP ADJUSTMENT AND ADJUSTABLE HOSE HOLDER

Series RO.300



Balanced piston pressure reducer with step adjustment for the delivery of the output flow. The hose holder can be rotated 360°, facilitating the insertion of the nasal cannula and/or mask.

REFERENCE LEGISLATIVE STANDARDS

CE0123 Council Directive 93/42/EEC
Class IIB

REFERENCE TECHNICAL STANDARDS

UNI EN 10524-1

TECHNICAL FEATURES

PERFORMANCE

Gas Medical Oxygen
Inlet pressure 230 bar (a rich. 300 bar)
Outlet pressure 4 bar
Flow rate 0-15 lt/min
Flow steps 1-1,5-2-3-4-6-9-12-15
Flow rate 0-6 lit/min (a rich.)
Flow steps 0,5-1-1,5-2-2,5-3-4-5-6
Accuracy +10% o +/- 0,5 lt.min.
Operating temperature -20° C +50°C

MATERIALS

Body CW617N-UNI EN 12165 Chrome-plated brass
Reducing piston Brass and P.A.6.6

GAUGE

Full scale 0-315 Bar
Accuracy class 2.5
Diameter 50 mm.
Fitting 1/8" G.C

CONNECTIONS

Outlet 9/16" with nut and hose holder 6 mm.
Inlet connection UNI 11144/2

DIMENSION AND WEIGHT

Dimension 140 x 40 x 90 mm.
Weight 0,69 kg.

SAFETY DEVICES

Overpressure valve, Single test, Sintered filter

TRACEABILITY


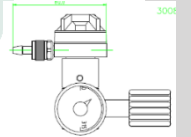




Serial number stamped on the valve body

LIFETIME OF THE PRODUCT

10 years from product manufacturing

DOCUMENTATION

Declaration of Conformity and instructions for use

Connection UNI AFNOR 	12250 Lateral connection 
12239 12245 12240 	12256 SINGLE USE CYLINDERS 
12245VE Connection AFNOR with Venturi aspirator EPG 	12245 DIN 12245NF 

Code	Description	Inlet	Outlet	Flow capacity	Gas
RO.300.12208	DISPENSER O2 UNI LT. MIN 0-3	UNI	PG	0-3lt/m	O2
RO.300.12208NF	DISPENSER O2 NF LT. MIN 0-3	NF B	PG	0-3lt/m	O2
RO.300.12239NF	DISPENSER O2 NF MINI AXIS 0-6L/min SCATTI	NF B	PG	0-6L/m	O2
RO.300.12239UNI	DISPENSER O2 UNI MINI AXIS 0-6L/min SCALKS	UNI	PG	0-6L/m	O2
RO.300.12240NF	DISPENSER O2 NF AXIS 0-15 L/min SCATTI	NF B	PG	0-15L/m	O2
RO.300.12240UNI	DISPENSER O2 UNI AXIS 0-15 L/min SCATTI	UNI	PG	0-15L/m	O2
RO.300.12245DIN	DISPENSER O2 DIN 1AXIS 0-3LT. Min	DIN	PG	0-3lt/m	O2
RO.300.12250DIN	MINI O2 DIN ATT DISPENSER. Lat.	DIN	PG	0-15L/m	O2
RO.300.12250NF	DISPENSER MINI O2 NF ATT. Lat.	NF B	PG	0-15L/m	O2
RO.300.12250PIN	MINI O2 PIN INDEX DISPENSER ATT. Lat.	PIN	PG	0-15L/m	O2
RO.300.12250UNI	DOSER MINI O2 UNI ATT. Lat.	UNI	PG	0-15L/m	O2
RO.300.12250UNI	DOSER MINI O2 UNI ATT. Lat.	UNI	PG	0-15L/m	O2
RO.300.12256	DISPENSER O2 MINI ATT.12X1,,5	12X1,5	PG	0-15L/m	O2
RO.300.12256NF	DISPENSER O2 MINI ATT.12X1,,6	12X1,5	PG + AFNOR	0-15L/m	O2
RO.301.12240UNI	DISPENSER O2 UNI 0-15 L/min SOCKET UNI	UNI	UNI	0-15L/m	O2
RO.301.12250UNI	DISPENSER MINI O2 ATT. Lat. UNI SOCKET	UNI	UNI	0-15L/m	O2
RO.302.12240DIN	DISPENSER O2 DIN9 0-15 L/min W/AFNO SOCKET	DIN9	AFNOR	0-15L/m	O2
RO.302.12240NF	DISPENSER O2 NF 0-15 L/min C/AFNO SOCKET	NF B	AFNOR	0-15L/m	O2
RO.302.12240UNI	DISPENSER O2 UNI 0-15 L/min C/AFNO SOCKET	UNI	AFNOR	0-15L/m	O2
RO.302.12250NF	DISPENSER MINI O2 NF ATT. Lat. AFNOR SOCKET	NF B	AFNOR	0-15L/m	O2
RO.303.12240DIN	DISPENSER O2 DIN9 0-15 L/min PRESADIN	DIN 9	DIN	0-15L/m	O2
RO.303.12240DIN6	DISPENSER O2 DIN 0-15 L/min W/DIN SOCKET	DIN6	DIN	0-15L/m	O2
RO.303.12240UNI	DISPENSER O2 UNI 0-15 L/min C/DIN SOCKET	UNI 2	DIN	0-15L/m	O2

FIRST STAGE PRESSURE REDUCER FOR MEDICAL EQUIPMENT, ADJUSTABLE OUTPUT PRESSURE 0-4BAR

Series RO.200



Single stage pressure reducer. It is used to power medical systems and equipment. It can be equipped with a outlet rubber hose or UNI/AFNOR/DIN/BS socket. The outlet pressure is adjustable.

SAFETY DEVICES

- Over pressure safety valve
- Single unit test
- Sintered filter
- Single integrated body

TRACEABILITY

Serial number stamped on the valve body

LIFETIME OF THE PRODUCT

10 years from product manufacturing

DOCUMENTATION

Declaration of Conformity and instructions for use

REFERENCE LEGISLATIVE STANDARDS

CE₀₁₂₃ Council Directive 93/42/EEC
Class IIB

REFERENCE TECHNICAL STANDARDS

UNI EN 10524-1

TECHNICAL FEATURES

PERFORMANCE

Gas O₂, Air, N₂O, CO₂
Inlet pressure 230 bar (on request 300 bar)
Outlet pressure adjustable 0-4 bar
Operating temperature -20° C +50° C

MATERIALS

Body CW617N-UNI EN 12165
Chrome-plated brass
Reducing piston Brass and P.A.6.6

GAUGE

Full scale 0-315 Bar
0-16 bar (b p)
Accuracy class 2.5
Diameter 50 mm.
Fitting 1/8" G.C

CONNECTION

Outlet Perpendicular to the inlet connection
9/16 and hose connector 6 mm.
Fitting UNI AFNOR
Inlet connection UNI 11144/2 (Medical oxygen)
UNI 11144/6 (Medical air)
UNI 11144/9 (Medical nitrous oxide)
UNI 11144/10 (Medical carbon dioxide)

DIMENSION AND WEIGHT

Dimension 130 x 120 x 190 mm.
Weight 1,130 kg.

Code	Description	Inlet	Outlet	Gas
RO.200.12081UNI	REDUCER 1° STADIO 2MAN. O2 UNI PG	UNI 2	PG	O2
RO.200.12081NF	REDUCER 1° STADIO 2MAN. O2 NF PG	NF B	PG	O2
RO.200.12081DIN	REDUCER 1° STADIO 2MAN. O2 DIN9 3/4 G /PG	DIN	PG	O2
RO.200.12081DIN6	REDUCER 1° STADIO 2MAN. O2 DIN6 21.8 PG	DIN6	PG	O2
RO.200.12082UNI	REDUCER 1° STADIO 2MAN. AIR UNI PG	UNI 6	PG	ARIA
RO.200.12082NF	REDUCER 1° STADIO 2MAN. AIR NF PG	NF B	PG	ARIA
RO.200.12082DIN	REDUCER 1° STADIO 2MAN. AIR DIN 5/8 PG	DIN	PG	ARIA
RO.200.12082DIN6	REDUCER 1° STADIO 2MAN. AIR DIN 6 21,8PG	DIN6	PG	ARIA
RO.200.12084MED	REDUCER 1° STADIO 2MAN. CO2 MED PG	UNI 10H	PG	CO2 MED
RO.200.12086UNI	REDUCER 1° STADIO 2MAN. N2O UNI PG	UNI9	PG	N2O
RO.200.12086NF	REDUCER 1° STADIO.2MAN. N2O NF PG	AFNOR G	PG	N2O
RO.202.12091	REDUCER 1 STD 2MAN. O2 + AFNOR	UNI 2	AFNOR	O2
RO.201.12101	REDUCER 1 STD 2MAN. O2 + UNI	UNI 2	UNI	O2
RO.201.12102	REDUCER 1 STD 2MAN. AIR + UNI INTAKE	UNI 6	UNI	ARIA
RO.201.12104	REDUCER 1 STD 2MAN. CO2 MED + UNI	UNI 10H	UNI	CO2 MED
RO.201.12106	REDUCER 1 STD 2MAN. N2O + UNI	UNI9	UNI	N2O

DOUBLE STAGE PRESSURE REDUCER FOR MEDICAL EQUIPMENT WITH ADJUSTABLE OUTPUT PRESSURE 0-4 BAR

Series RO.200



The double stage allows a finer and more constant regulation of the pressure, this reducer is used to power medical systems and equipment. It can be equipped with a rubber port outlet or UNI/AFNOR socket and the outlet pressure is adjustable.



SAFETY DEVICES

- Over pressure safety valve
- Single unit tests
- Sinter filter
- Single integrated body

TRACEABILITY

Serial number stamped on the valve body

LIFETIME OF THE PRODUCT

10 years from product manufacturing

DOCUMENTATION

Declaration of Conformity and Instructions for use

REFERENCE LEGISLATIVE STANDARDS

CE₀₁₂₃ Council Directive 93/42/EEC
Class IIB

REFERENCE TECHNICAL STANDARDS

UNI EN 10524-1

TECNICAL FEATURES

PERFORMANCE

Gas O₂, Air, N₂O, CO₂
Inlet pressure 230 bar (upon request 300 bar)
Outlet pressure Adjustable. 0-5 bar
Operating temperature -20° C +50° C

MATERIALS

Body CW617N-UNI EN 12165 Chrome-plated brass
Reducing piston Brass and P.A.6.6

GAUGE

Full scale 0-315 Bar 0-10 bar (low pressure)
Accuracy class 2.5
Diameter 50 mm.
Fitting 1/8" G.C

CONNECTIONS

Outlet Perpendicular to the inlet connection
9/16 and hose connector 6 mm.
Socket UNI AFNOR
Inlet connection UNI 11144/2 (Medical oxygen)
UNI 11144/6 (Medical air)
UNI 11144/9 (Medical nitrous oxide)
UNI 11144/10 (Medical carbon dioxide)

DIMENSIONS AND WEIGHT

Dimension 130 x 120 x 190 mm.
Weight 1,130 kg

Code	Description	Inlet	Outlet	Gas
RO.200.12161DIN	REDUCER 11° STADIO 2MAN. O2 DIN PG	DIN	PG	O2
RO.200.12161NF	REDUCER 11° STADIO 2MAN. O2 NF PG MED CE	NF B	PG	O2
RO.200.12161UNI	REDUCER 11° STADIO 2MAN. O2 UNI PG MED CE	UNI 2	PG	O2
RO.200.12162UNI	REDUCER 11° STADIO 2MAN. AIR UNI PG MED	UNI 6	PG	ARIA
RO.200.12163UNI	REDUCER 11° STADIO 2MAN. CO2 UNI PG MED	UNI 2	PG	CO2
RO.200.12164MED	REDUCER 11° STADIO 2MAN. CO2 MED PG MED	CO2 MED	PG	CO2 MED
RO.200.12165UNI	REDUCER 11° STADIO 2MAN. N2 UNI PG MED	UNI 5	PG	N2
RO.200.12166UNI	REDUCER 11° STADIO 2MAN. N2O UNI PG MED	UNI9	PG	N2O
RO.200.12168PIN	RIDUTTORE 2 STD 2MAN. pin index	STAFFA P.I.	PG	0
RO.201.12161UNI	REDUCER 2 STD 2MAN. O2 SOCKET UNI CE	UNI 2	UNI	O2
RO.202.12161UNI	RIDUTTORE 2 STD 2MAN. O2UNI MED CE PRESA AFN	UNI 2	AFNOR	VARI
RO.201.12162UNI	RIDUTTORE 2 STD 2MAN. AIRUNI MED CE PRESA UNI	UNI 6	UNI	ARIA
RO.202.12162UNI	RIDUTTORE 2 STD 2MAN. AIRUNI MED CE PRESA AFN	UNI 6	AFNOR	VARI
RO.201.12164UNI	RIDUTTORE 2 STD 2MAN. CO2 UNI MED CE PRESA UNI	UNI 10H	UNI	CO2 MED
RO.202.12164MED	RIDUTTORE 2 STD 2MAN. CO2 MED CE PRESA AFNOR	UNI 10H	AFNOR	CO2 MED
RO.201.12166UNI	RIDUTTORE 2 STD 2MAN. N2O UNI MED PRESA UNI	UNI9	UNI	N2O
RO.202.12166UNI	RIDUTTORE 2 STD 2MAN. N2O UNI MED PRESA AFN	UNI9	AFNOR	VARI
RO.201.12168PIN	RIDUTTORE 2 STD 2MAN. O2 STAFFA P.I. PG	STAFFA	UNI	O2

DOUBLE STAGE PRESSURE REDUCER FOR MEDICAL EQUIPMENT, WITH PRE-CALIBRATED OUTLET PRESSURE 4 BAR

Series RO.200



It is used to power medical systems and equipment.
It can be equipped with a hose outlet connection or UNI/AFNOR socket and the outlet pressure is adjustable.

SAFETY DEVICES

Over pressure safety valve
Single unit tests
Sinter filter
Single integrated body

TRACEABILITY

Serial number stamped on the valve body

LIFETIME OF THE PRODUCT

10 years from product manufacturing

DOCUMENTATION

Declaration of Conformity and Instructions for Use

REFERENCE LEGISLATIVE STANDARDS

CE₀₁₂₃ Council Directive 93/42/EEC
Class IIB

REFERENCE TECHNICAL STANDARDS

UNI EN 10524-1

TECHNICAL FEATURES

PERFORMANCE

Gas O₂, Air, N₂O, CO₂
Inlet pressure 230 bar (upon request 300 bar)
Outlet pressure Adjustable, 0-4 bar
Operating temperature -20° C +50° C

MATERIALS

Body CW617N-UNI EN 12165
Chrome-plated brass
Brass and P.A.6.6

Reducing piston

GAUGE

Full scale 0-315 Bar
0-10 bar (low pressure)
Accuracy class 2.5
Diameter 50 mm.
Fitting 1/8" G.C

CONNECTIONS

Outlet Perpendicular to the inlet connection
9/16 and hose connector 6 mm.
Socket UNI AFNOR
Inlet connection UNI 11144/2 (Medical oxygen)
UNI 11144/6 (Medical air)
UNI 11144/9 (Medical nitrous oxide)
UNI 11144/10 (Medical carbon dioxide)

DIMENSIONS AND WEIGHT

Dimension 130 x 120 x 190 mm.
Weight 1,130 kg

Code	Description	Inlet	Outlet	Gas
RO.200.12120MED	REDUCER I1° STADIO 1MAN. CO2 MED. Pg	UNI 2	PG	CO2
RO.200.12121CGA	REDUCER I1° STADIO 1MAN. O2 CGA PG	CGA	PG	O2
RO.200.12121DIN	REDUCER I1° STADIO 1MAN. O2 DIN PG	DIN	PG	O2
RO.200.12121DIN6	REDUCER I1° STADIO 1MAN. O2 DIN6 PG	DIN6	PG	O2
RO.200.12121NF	REDUCER I1° STADIO 1MAN. O2 NF PG	NF B	PG	O2
RO.200.12121PIN	REDUCER 2ST.1MAN. O2 PIN INDEXC/PG-	PIN INDEX	PG	O2
RO.200.12121UNI	REDUCER I1° STADIO 1MAN. O2 UNI PG	UNI 2	PG	O2

DOUBLE STAGE PRESSURE REDUCER FOR OZONE THERAPY

Series RO.200



Double or single stage pressure reducers. They can be used to power medical systems and equipment for ozone therapy.

They can be equipped with a hose connection outlet or UNI/AFNOR socket. The outlet pressure is adjustable.

SAFETY DEVICES

- Over pressure safety valve
- Single unit tests
- Sinter filter
- Single integrated body

TRACEABILITY

Serial number stamped on the valve body

LIFETIME OF THE PRODUCT

10 years from product manufacturing

DOCUMENTATION

Declaration of Conformity and Instructions for Use

REFERENCE LEGISLATIVE STANDARDS

CE₀₁₂₃ Council Directive 93/42/EEC
Class IIB

REFERENCE TECHNICAL STANDARDS

UNI EN 10524-1

TECHNICAL FEATURES

PERFORMANCE

Gas O₂,
Inlet pressure 200 bar
Outlet pressure Adjustable. 0-5 bar
Operating temperature -20° C +50°C

MATERIALS

Body CW617N-UNI EN 12165
Chrome-plated brass
Reducing piston Brass and P.A.6.6

GAUGE

Full scale 0-315 Bar
0-10 bar (low pressure)

Accuracy class 2.5

Diameter 50 mm.

Fitting 1/8" G.C

CONNECTIONS

Outlet Perpendicular to the inlet connection
9/16 and hose connector 6 mm.

Socket Hose connector
Inlet connection UNI 11144/2 (Medical oxygen)

DIMENSIONS AND WEIGHT

Dimension 130 x 120 x 190 mm.

Weight 1,130 kg

Code	Description	Inlet	Outlet	Max outlet pressure	Gas
RO.200.12187	RIDUTTORE 2 STD PISTONE 2 MAN. O2 0-2	UNI 2	PG	0-2,5	O2
RO.300.12230	O2 DISPENSER calibrated to 0.45bar	UNI 2	PG	0,45 fissa	O2
RO.200.12081UNI	REDUCER 1° STADIO 2MAN. O2 UNI PG	UNI 2	PG	0-4	O2

MEDICAL OXYGEN FLOWMETER WITH STEP ADJUSTMENT

Series RO.400



It is used to power medical systems and equipment. It can be equipped with a hose holder or UNI/AFNOR socket. The outlet pressure is adjustable.

SAFETY DEVICES

Over pressure safety valve
Single unit tests
Sinter filter
Single integrated body

TRACEABILITY

Serial number stamped on the valve body

LIFETIME OF THE PRODUCT

10 years from product manufacturing

DOCUMENTATION

Declaration of Conformity and Instructions for Use

REFERENCE LEGISLATIVE STANDARDS

CE₀₁₂₃ Council Directive 93/42/EEC
Class IIB

REFERENCE TECHNICAL STANDARDS

UNI EN 10524-1

TECHNICAL FEATURES

PERFORMANCE

Gas Medical oxygen
Inlet pressure 3.5 bar

- Flow rate 0-15 lt/min
- Flow steps 1-1,5-2-3-4-6-9-12-15
- Flow rate 0-6 lt/min (upon request)
- Flow steps 0,5-1-1,5-2-2,5-3-4-5-6

Accuracy +10% o +- 0,5 lt.min.
Operating temperature -20° C +50°C

MATERIALS

Body Chromed-brass CW617N-UNI EN 12165
Piston Brass and P.A.6.6

CONNECTIONS

Inlet AFNOR/UNI
Outlet 9/16 UNF male (1/4" upon request) with nut and hose connector

DIMENSIONS AND WEIGHT

Dimension 170 x 100 x 110 mm.
Weight 0,780 kg.

Code	Description	Inlet	Outlet	flow capacity	Gas
RO.400.12039UNI	JERKY FLOW METER 9/16" UNI COUPLING	UNI	PG	0-15L/m	O2
RO.400.12039	1/4G JERKY FLOW METER, without coupling	1/4G	PG	0-15L/m	O2
CO.400.12059	HUMIDIFIER 9/16UNF FOR FLOW METER	9/16 UNF	PG	0-15L/m	O2
CO.400.18016	DISPOSABLE HUMIDIFIER 9/16" MU0002	9/16 F	PG	0-15L/m	O2

MEDICAL OXYGEN FLOWMETER WITH GRAFT

Series RO.400



Medical oxygen flowmeter with continuous regulation for hospital systems.
The adjustment after the passage from the column allows greater flow stability.



SAFETY DEVICES

Single unit tests
Sinter filter
Single integrated body

TRACEABILITY

Serial number stamped on the valve body

LIFETIME OF THE PRODUCT

10 years from product manufacturing

DOCUMENTATION

Declaration of Conformity and Instructions for Use

REFERENCE LEGISLATIVE STANDARDS

CE₀₁₂₃ Council Directive 93/42/EEC
Class IIA

REFERENCE TECHNICAL STANDARDS

UNI EN ISO 15002

TECHNICAL FEATURES

PERFORMANCES

Gas Medical Oxygen
Inlet pressure 4 bar
Flow rate 0-15 lit/min
with adjustable sphere
Operating temperature -20° C +50° C

MATERIALS

Body CW617N-UNI EN 12165
Chrome-plate brass
Opening Nylon with brass insert

CONNECTION

Inlet AFNOR/UNI/DIN
Outlet male 9/16 UNF (1/4" upon req.) with nut and hose connector

DIMENSIONS AND WEIGHT

Dimensions 170 x 100 x 110 mm. (single)
Weight 0,780 kg.

Code	Description	Inlet	Outlet	Flow capacity	Gas
RO.400.12047	FLOW METER 9/16UNF UNI COUPLING	UNI	PG	0-15L/m	O ₂
RO.400.12047DIN	FLOW METER 9/16UNF DIN MOUNT	DIN	PG	0-15L/m	O ₂
RO.400.12049	FLOW METER 9/16UNF AFNOR GRAFT	NF B	PG	0-15L/m	O ₂
RO.400.12190	AFNOR DOUBLE COUPLING FLOW METER	NF B	PG	0-15L/m	O ₂
RO.400.12191	FLOW METER DOUBLE COUPLING UNI	UNI 1H	PG	0-15L/m	O ₂
RO.400.12194	FLOW METER GRAFT AFNOR C/UMIDIF.	NF B	PG	0-15L/m	O ₂
RO.400.12195	FLOW METER GRAFT UNI C/UMIDIF.	UNI 2	PG	0-15L/m	O ₂
RO.400.12197	DOUBLE INN FLOW METER. AFNOR C/UMIDIF	NF B	PG	0-15L/m	O ₂
RO.400.12198	DOUBLE INN FLOW METER. UNI C/UMIDIF	UNI 2	PG	0-15L/m	O ₂
CO.400.12059	HUMIDIFIER 9/16UNF FOR FLOW METER	9/16 UNF	PG	0-15L/m	O ₂
CO.400.18016	DISPOSABLE HUMIDIFIER 9/16" MU0002	9/16 F	PG	0-15L/m	O ₂

ACCESSORIES



Code	Description	Inlet	outlet	Gas
RO.400.12001	SPLITTER FOR FLOW METER	UNI 2	0,00	O
RO.400.12001DIN	SPLITTER FOR FLOW METER DIN	UNI 2	0,00	O
1692	QUICK COUPLING UNI-GC1/4X10	UNI 2	GC 1/4	O
1692	QUICK COUPLING UNI-GC1/4X10	UNI 2	GC 1/4	O
1692C	QUICK COUPLING UNI CON PORTAGOM	UNI	0,00	O
1692A	QUICK COUPLING UNI-90°PORTAG.	UNI	0,00	O
CO.100.12067	UNI O2 1/4" SOCKET	UNI	G1/4	O2
1692A	QUICK COUPLING UNI-90°PORTAG.	UNI	0,00	O
CO.100.12068	AIR INTAKE 20X1,5SX	0,00	G1/5	ARIA
1692N2O	QUICK COUPLING UNI-N2O+ PORTAGOMMA	UNI	0,00	O
CO.100.12069	UNI N2O VGT45M-P/PB SOCKET	UNI	0,00	N2O
CO.100.12072	UNI CO2 MEDICAL GC1/4" SOCKET	UNI	0,00	CO2
1694	AFNOR C-PORT STRAIGHT QUICK COUPLING GC1/4 F	AFNOR	G C1/4 f	O
1694C	QUICK COUPLING AFNOR-GC1/4"	AFNOR	PG	O
1694B	QUICK COUPLING AFNOR 1/8'	AFNOR	1/8'	O
1694D	QUICK COUPLING AFNOR- 90°	AFNOR	GC 1/4	O
1694A	QUICK COUPLING AFNOR- 3/8 UNF F.	AFNOR	3/8UNF	O
1694E	QUICK COUPLING AFNOR O2 9/16 UNF	AFNOR	GC 1/8	O2
CO.100.12064	AFNOR O2 1/4" SOCKET	NF	G1/4	O2
CO.100.12065	1/4" AIR INTAKE	NF B	0,00	ARIA
1694N2O	QUICK COUPLING AFNOR N2O C-PORT DRITTO	AFNOR G	PG	N2O
CO.100.12066	AFNOR N2O 1/4" SOCKET	AFNOR G	0,00	N2O
CO.100.12070	AFNOR CO2 MEDICAL SOCKET 1/4"	AFNOR C	0,00	CO2
1690	QUICK COUPLING DIN 1/4 IGTD F1/4-O	DIN	F1/4-	O
1690O2	COUPLINGDIN OSSIGENO CON PORT. 90°	DIN	0,00	O2
4022	QUICK COUPLING DIN O2 G1/8" PER FLUSS	DIN	0,00	O2
4021	QUICK COUPLING DIN O2 1/4" NPT	DIN	0,00	O2
CO.100.12063	OXYGEN SOCKET 1326PART.2	DIN	G1/4	O2

HUMIDIFIER AND ACCESSORIES FOR OXYGEN THERAPY

STERILIZABILE HUMIDIFIER FOR OXYGEN THERAPY

Series CO.400



Sterilizable humidifier for oxygen therapy. It is a device that allows you to increase the humidity level during oxygen therapy both at home and at hospitals.

TRACEABILITY

Serial number stamped on the valve body

LIFETIME OF THE PRODUCT

10 years from product manufacturing

DOCUMENTATION

Declaration of Conformity and Instructions for Use

REFERENCE LEGISLATIVE STANDARDS

CE₀₁₂₃ Council Directive 93/42/EEC
Class IIA

REFERENCE TECHNICAL STANDARDS

EN ISO 20789

TECHNICAL FEATURES

PERFORMANCE

Operating temperature 2°C – 50°C (+/- 10%)

MATERIALS

Body Sterilizable macron
Fitting Chromed brass connection

CONNECTIONS

Inlet 9/16 UNF female
Outlet Adjustable hose connector 6 mm.

DIMENSION AND WEIGHT

Dimension 175 mm x 116 mm
Weight 180 gr.

DISPENSING FLOW

20 lt/min. (max)

OPERATING PRESSURE

5 bar (max)

CAPACITY

250 cc.

Code	Description	Inlet	Outlet	Flow capacity	Gas
CO.400.12059	HUMIDIFIER 9/16UNF FOR FLOW METER	9/16 UNF	PG	0-15L/m	O2

SINGLE-PATIENT HUMIDIFIER FOR OXYGEN THERAPY Series CO.400.18016



Single-patient bubbler humidifier. Connection to the 9/16" UNF flowmeter. Cup in non-toxic PVC material with a capacity of 350 cc. Equipped with a 6 psi safety valve, it is very simple to connect to the oxygen source thanks to the connection with large fins. Product identification label. Built and marked as intended for medical devices.
Packs of 50 pieces.

Code	Description	Inlet	Outlet	Flow capacity	Gas
CO.400.18016	DISPOSABLE HUMIDIFIER 9/16" MU0002	9/16 F	PG	0-15L/m	O2

SINGLE-PATIENT HUMIDIFIER FOR OXYGEN THERAPY Series CO.400.18015



Single-patient bubbler humidifier. It has a PVC B cap cup and a medical grade PVC internal extension tube. Polyethylene silencer filter (80µ). Suitable for use when there is no possibility of direct connection with the pressure reducer. Latex-free product, packaged in a heat-sealed bag, has a shelf life of 5 years from the date of manufacture. The products has an identification label. Built and marked as intended for medical devices.
Packs of 200 pieces.

Code	Description	Inlet	Outlet	Flow capacity	Gas
CO.400.18015	DISPOSABLE HUMIDIFIER WITH LANYARD	PG	PG	0-15L/m	O2

SINGLE-PATIENT HUMIDIFIER KIT FOR OXYGEN THERAPY Series CO.400.18015KIT



This KIT includes a bubbling humidifier and a pair of disposable glasses, Ray Ban style. It has a PVC cap cup and a medical grade PVC internal extension tube. Polyethylene silencer filter (80µ). Suitable for use when there is no possibility of direct connection with the pressure reducer. Latex-free product, packaged in a heat-sealed bag, has a shelf life of 5 years from the date of manufacture. Product identification label. Built and marked as intended for medical devices.
Packs of 150 pieces.

Code	Description	Inlet	Outlet	Gas
CO.400.18015KIT	DISPOSABLE HUMIDIFIER KIT WITH CANULE	PG	PG	O2

SINGLE-PATIENT MASKS FOR OXYGEN THERAPY Series CO.400.18021



Masks for Oxygen Therapy.
The anti-crush hose prevents interruptions in the oxygen flow.
The products are disposable and packaged in a single bag containing the product data and production date (pediatric version on request).
Expiration of 3 years from the production date is shown on the packaging. The product is compliant with Directive 93/42/EEC (Legislative Decree 46/97), Class IIA device. Packs of 50 pieces.

Code	Description	Inlet
CO.400.18021	OXYGEN THERAPY MASK WITH TUBE	PG
CO.400.18021A	MASK FOR OSSIG. NEONATAL WITH TUBE	PG
CO.400.18021B	PEDIATRIC OXYGEN MASK W/TUBE	PG

SINGLE-PATIENT MASKS FOR OXYGEN THERAPY

Series CO.400.18018



Disposable mask for variable concentration oxygen therapy with 15 cm corrugated tube. Anti-crush extension tube lg. 2000 and F/F universal connection. Cup and adapters for varying the oxygen concentration (Blue 24% - Yellow 28% - White 31% - Green 40% - Orange 50%). Medical grade PVC mask and tube, latex-free product. External diameter of the anti-crushing tube: 6.0 mm. Packaged in a single heat-sealed bag (pediatric version on request).

Expiry: 3 years from the production date shown on the packaging.
Compliant with Directive 93/42/EEC (Legislative Decree 46/97). Class IIA device. Packs of 50 pieces.

Code	Description	Inlet
CO.400.18018	VENTURI KIT MASK	PG
CO.400.18018A	VENTURI MASK PEDIATRIC KIT	PG



Aerosol therapy mask with lg. 2000 anti-crushing tube ampoule with universal F/F connection. Medical grade PVC mask and tube, latex-free products. Tube external diameter: 6.0 mm. Packaged in a single heat-sealed bag (Pediatric version CO.400.18018A on request). Expiry: 3 years from the production date shown on the packaging. Complies with Directive 93/42/EEC (Legislative Decree 46/97). Class IIA device. Packs of 50 pieces

Code	Description
CO.400.18023	OXYGEN THERAPY MASK C-BALLOON
CO.400.18011	SILICONE HALF MASK C/VALV. ON DEMAND

SINGLE-PATIENT NASAL CANNULA FOR OXYGEN THERAPY

Series CO.400.18020

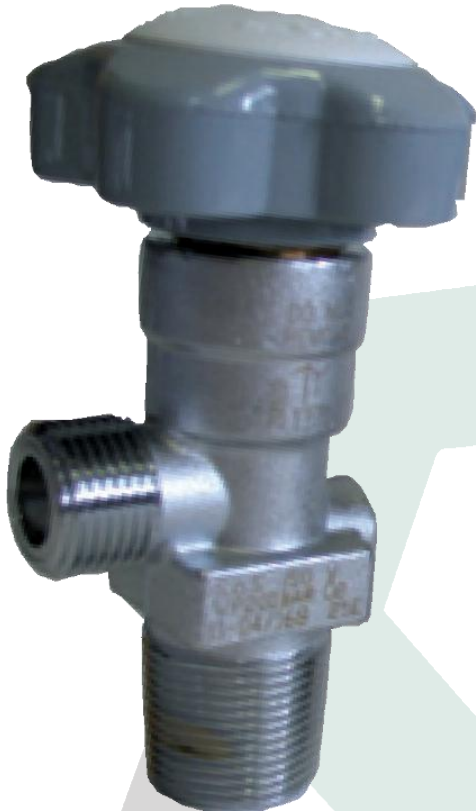


Nasal cannulas for oxygen therapy. The anti-crush hose prevents interruptions in the oxygen flow. The products are disposable and packaged in a single heat-sealed bag reporting the product data and production date. Expiry: 5 years from the production date shown on the packaging. Complies with Directive 93/42/EEC (Legislative Decree 46/97). Class IIA device. Packs of 50 pieces.

Code	Description
CO.400.18020	NASAL CANNULA OS/12A

MEDICAL GAS VALVE MOD. FUTURA

Series VI.200



FUTURA valve is for high pressure medical gas cylinders.

REFERENCE LEGISLATIVE STANDARDS

π1370

Directive 2010/35/EU

REFERENCE TECHNICAL STANDARDS

UNI EN ISO 10297

PERFORMANCE

Gas	O ₂ /Air/N ₂ O/CO ₂
Inlet pressure	230 Bar
Operating temperature	-45° C +65°C

MATERIALS

Body	Chromed brass CW617N-UNI EN 12165
Shutter	Peek with brass pit
Hole seat	5,2 mm.
O-ring	EPDM
Valve knob	Grey painted aluminum

CONNECTIONS

Inlet	25 E
Outlet	UNI - NF - DIN - BS - CGA
Filling connection	UNI 11144/2 (Med. oxygen) UNI 11144/6 (Med. air) UNI 11144/10 (Med. Carbon Dioxide)
Dip tube connection	M10x1

DIMENSIONS AND WEIGHT

Dimension	120 x 60 x 52 mm
Weight	0,65Kg

SAFETY DEVICES

Overpressure valve (CO₂-N₂O)

DOCUMENTATION

Declaration of Conformity and Instructions for Use

Code	Description	Inlet	Outlet	Gas
VI.236.20538UNI	Val. FUTURA 25E CO ₂ UNI 11144/2 W/D 250	25E	UNI/2	CO ₂
VI.236.20540UNI	Val. FUTURA 25E CO ₂ UNI 11144/2 CROM	25E	UNI/2	CO ₂
VI.236.20520	Val. FUTURA 25E O ₂ UNI 11144/2	25E	UNI 2	O ₂
VI.236.20544UNI	Val. FUTURA 25E N ₂ O UNI 11144/9 CROM	25E	UNI 1144/9	N ₂ O
VI.244.20402	Val. FUTURA 25E UNI 11144/6 Aria cm	25E	UNI 1144/6	ARIA
VI.244.20404NF	Val. FUTURA 25E O ₂ NF E29-656 CROM.	25E	NF E29-656 /B	O ₂
VI.244.20568ISO	Val. FUTURA 25E CO ₂ ISO5145 MED CROM.	25E	ISO5145	CO ₂ MED
VI.244.20534DIN	Val. FUTURA 25E O ₂ DIN477/9 200bar	25E	DIN 9	O ₂

MEDICAL GASES RESIDUAL VALVE MOD. FUTURA

Series VI.400



Residual valves mod. FUTURA in chromed brass for high pressure cylinders. This valve is equipped with a positive pressure residual system, with the specific function of preventing the penetration of all molecules foreign to the gas found in the cylinder, leaving a residual gas of approximately 3 bar.



Adapter for FUTURA Valve
High pressure brass body with stainless steel tip. Connection according to UNI/NF/BS/DIN standards.

REFERENCE LEGISLATIVE STANDARDS

π1370 Directive 2010/35/EU

REFERENCE TECHNICAL STANDARDS

UNI EN ISO 10297

PERFORMANCE

Gas O₂/Air/N₂O/CO₂
Inlet pressure 230 Bar
Operating temperature -45° C +65°C
Residual pressure 2,5/4bar

MATERIALS

Body Chromed brass CW617N-UNI EN 12165
Shutter Peek with brass ferrule
Hole seat 5,2 mm.
O-ring EPDM
Valve knob Grey painted aluminum

CONNECTION

Inlet 25 E – 17E
Outlet UNI - NF - DIN - BS - CGA
Filling connection UNI 11144/2 (Med. oxygen)
UNI 11144/6 (Med. air)
UNI 11144/10 (Med. Carbon dioxide)
Dip tube connection M10x1

DIMENSIONS AND WEIGHT

Dimension 120 x 60 x 52 mm
Weight 0,75Kg

ACCESSORY DEVICES

Charging adapter

SAFETY DEVICES

Overpressure valve (CO₂-N₂O)

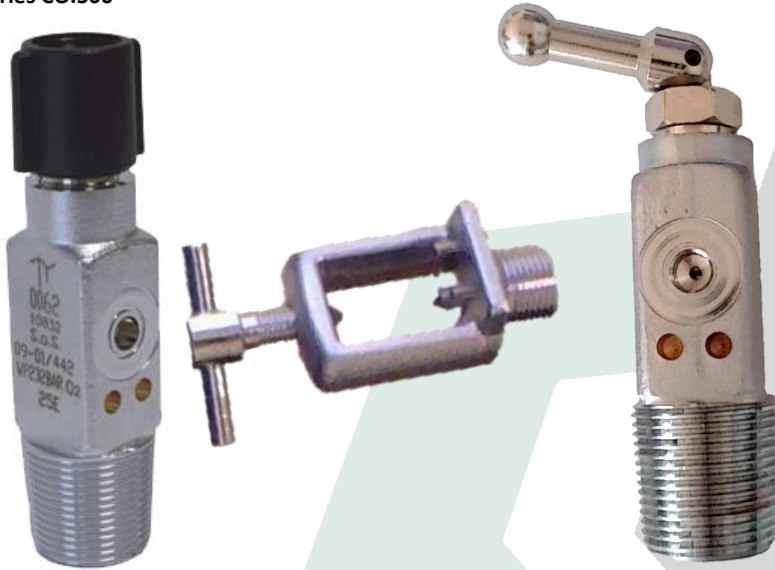
DOCUMENTATION

Declaration of Conformity and instructions for use.

Code	Description	Inlet	Outlet	Gas
VI.448.20611UNI	Val. FUTURA 25E O ₂ UNI 11144/2 RES.	25E	UNI/2	O ₂
VI.448.20615UNI	Val. FUTURA 17E O ₂ UNI 11144/2 RES.	17E	UNI/2	O ₂
VI.448.20617UNI	Val. FUTURA 25E ARIA UNI 11144 RES.	25E	UNI/6	ARIA
VI.448.20618UNI	Val. FUTURA 25E CO ₂ UNI 11144 MED. Res.	25E	UNI/10	CO ₂ MED
VI.448.20619UNI	Val. FUTURA 17E CO ₂ UNI 11144 MED RES.	17E	UNI/10	CO ₂ MED
VI.448.20620UNI	Val. FUTURA 17E N ₂ O UNI 11144 RES.	17E	UNI/9	N ₂ O
CO.100.10638	ADAPTER FOR FUTURA RES N ₂	UNI 5	0,00	N ₂
CO.100.10639	ADAPTER FOR FUTURA RES O ₂ -CO ₂ UNI	UNI 2	0,00	O ₂ CO ₂
CO.100.10640	ADAPTER FOR FUTURA RES Ar-He	UNI 8	0,00	Ar-He

PIN INDEX MEDICAL GAS VALVES

Series CO.500



High pressure Pin Index valve for medical gas cylinders. These devices are equipped with special connection holes to which is applied the appropriate bracket depending on the gas that will be used.

SAFETY DEVICES

Overpressure valve (CO₂-N₂O)

DOCUMENTATION

Declaration of Conformity and Instructions for Use.

REFERENCE LEGISLATIVE STANDARDS

π1370

Directive 2010/35/EU

TECHNICAL STANDARDS OF REFERENCE

UNI EN ISO 10297

PERFORMANCE

Gas O₂/Air/N₂O/CO₂
 Inlet pressure 230 Bar
 Operating temperature -45° C +65°C

MATERIALS

Body Chromed brass CW617N-UNI EN 12165
 Shutter Peek with brass ferrule
 Hole seat 2,4 mm.
 O-ring EPDM
 Valve knob Black Nylon

CONNECTIONS

Inlet 17E-25 E
 Outlet UNI/CGA
 Filling connection
 Dip tube connection M6

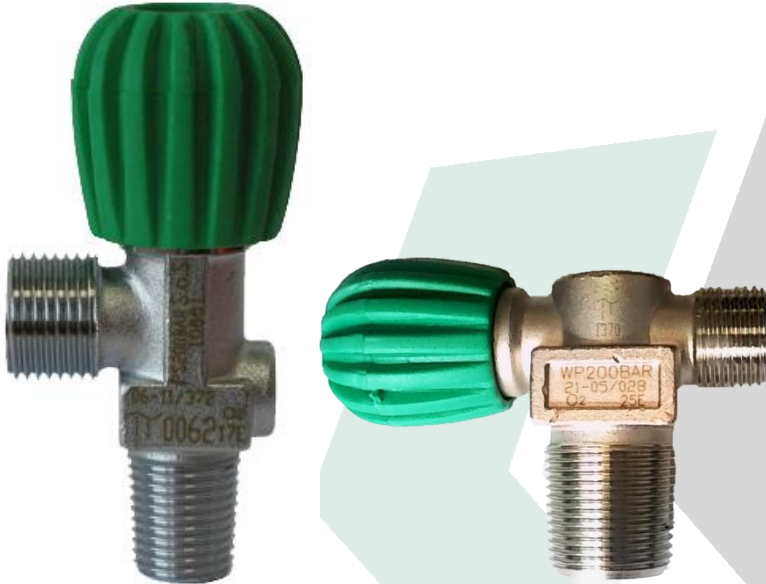
DIMENSIONS AND WEIGHT

Dimension 120 x 60 x 52 mm
 Weight 0,65Kg

Code	Description	Inlet	Outlet	Gas
VI.528.10802	Val. PIN INDEX 17E N2	17E	Pin index	N2
VI.528.10803	Val. PIN INDEX 17E N2O	17E	Pin index	N2O
VI.528.10804	Val. PIN INDEX 17E O2	17E	Pin index	O2
VI.528.10805	Val. PIN INDEX 17E CO2	17E	Pin index	CO2
VI.528.10806	Val. PIN INDEX 17E AIR	17E	Pin index	ARIA
VI.528.10807	Val. PIN INDEX 17E Ar-He	17E	Pin index	Ar-He
VI.528.10823	Val. PIN INDEX 1" N2O BS341	1"	Pin index	N2O
VI.528.10824	Val. PIN INDEX 1" O2 BS341	1"	Pin index	O2
VI.528.10831	Val. PIN INDEX 25E N2O	25E	Pin index	N2O
VI.528.10832	Val. PIN INDEX 25E O2	25E	Pin index	O2
VI.528.10833	Val. PIN INDEX 25E AIR	25E	Pin index	ARIA
VI.528.10835	Val. PIN INDEX 25E CO2	25E	Pin index	CO2
VI.528.10836	Val. PIN INDEX 25E Ar-He	25E	Pin index	Ar-He
VI.528.10837	Val. PIN INDEX 25E NITROGEN	25E	Pin index	N2
VI.528.60832L	Val. PIN INDEX 25E O2 WITH LEVER	25E	Pin index	O2
CO.503.10834	PIN INDEX ISO 407 N2 G ¼ CHROMED	Pin Index	G1/4	N2
CO.503.10835	PIN INDEX ISO 407 N2O G ¼ CHROMED	Pin Index	G1/4	N2O
CO.503.10836	PIN INDEX ISO 407 O2 G ¼ CHROMED	Pin Index	G1/4	O2
CO.503.10836A	PIN INDEX ISO 407 O2 21,7 CHROMED	Pin Index	21,70	O2
CO.503.10836B	PIN INDEX ISO 407 O2 3/4G CHROMED	Pin Index	G3/4	O2
CO.503.10837	PIN INDEX ISO 407 CO2 G ¼ CHROMED	Pin Index	G1/4	CO2
CO.503.10838	PIN INDEX ISO 407 ARIA G ¼ CHROMED	Pin Index	G1/4	ARIA
CO.503.10838BS	STAFFA PIN INDEX OSSIGENO BS3 G5/8	Pin Index	G5/8	O2
CO.503.10839	PIN INDEX ISO 407 AR-HE G ¼ CHROMED	Pin Index	G1/4	AR-HE
CO.503.10839A	PIN INDEX BRACKET Ar-He- 21,8	Pin Index	21,80	Ar-He

EURO 2000 VALVES FOR MEDICAL GAS CYLINDERS

Series VI.123



Euro 2000 valve in chromed brass for medical gas cylinders with 17 E connection. This compact device is suitable for application on small cylinders.

REFERENCE LEGISLATIVE STANDARDS

π1370 Directive 2010/35/EU

REFERENCE TECHNICAL STANDARDS

UNI EN ISO 10297

PERFORMANCE

Gas O²/Air/N²O/CO²

Inlet pressure 230 Bar

Operating temperature -45° C +65°C

MATERIALS

Body Chromed brass CW617N-UNI EN 12165

Shutter Peek with brass ferrule

Hole seat 2,4 mm.

O-ring EPDM

Valve knob Nylon

CONNECTIONS

Inlet 17 E

Outlet UNI - NF - DIN - BS - CGA

Filling connection UNI 11144/2 (Med. oxygen)

UNI 11144/6 (Med. air)

UNI 11144/10

(Med. Carbon dioxide)

M10x1

Dip tube connection

DIMENSIONS AND WEIGHT

Dimension 95 x 45 x 40 mm

Weight 0,645Kg

SAFETY DEVICES

Overpressure valve (CO₂-N₂O)

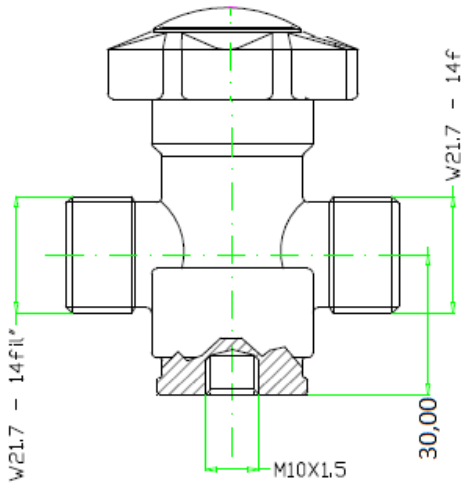
DOCUMENTATION

Declaration of Conformity and Instructions for Use.

Code	Description	Inlet	Outlet	Gas
VI.123.10748	Val. E20017E ARIA W30x14 UNI	17E	UNI 6	ARIA
VI.123.10752	Val. E20017E CO2 MEDICAL UNI	17E	UNI 10	CO2
VI.126.10861	Val. E200RID. 17E O2 UNI	17E	UNI 2	O2
VI.126.10864	Val. E200RID. 17E N2O UNI C/DISP.	17E	UNI 9	N2O
VI.123.10754	Val. E20017E O2 NF	17E	NF B	O2
VI.113.10760	Val. E200ANGULAR 25E O2 UNI2	25E	UNI 2	O2
VI.113.10762	Val. E200ONLINE 25E O2 UNI2	25E	UNI 2	O2
VI.113.10760RU	Val. E200ONLINE 17E O2 UNI2	17E	UNI 2	O2

VALVES FOR PANELS AND SPECIAL APPLICATIONS

VI.322.20702



REFERENCE LEGISLATIVE STANDARDS

π1370 Directive 2010/35/EU

STANDARD TECHNICAL STANDARDS

UNI EN ISO 10297

PERFORMANCE

Gas N2
 Inlet pressure 230 Bar
 Operating temperature -45° C +65°C

MATERIALS

Body Chromed brass CW617N-UNI EN 12165
 Shutter Peek with brass ferrule
 Hole seat M10c1,5 mm.
 O-ring EPDM
 Valve knob Grey painted aluminum

CONNECTIONS

Inlet UNI 5
 Outlet UNI -5

DIMENSIONS AND WEIGHT

Dimension 120 x 60 x 52 mm
 Weight 0,65Kg

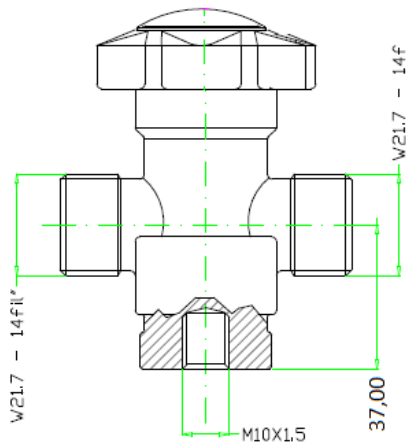
SAFETY DEVICES

Overpressure valve (CO2-N2O)

DOCUMENTATION

Declaration of Conformity and instructions for use. SDC

VI.322.20702STM



Code	Description	Inlet	Outlet	Gas
VI.322.20702	Val. FUTURA M10x1.5 21.7x14+21.7x14 QUAD	UNI 1144/2	UNI 1144/2	O2
VI.322.20702C	Val. FUTURA M10x1.5 24.32-24.32 DIN10AZO	DIN10	DIN10	N2

STEEL PROTECTIVE CAP FOR VALVES

Series DCAPP



REFERENCE TECHNICAL STANDARDS

EN ISO 11117

TECHNICAL FEATURES

MATERIALS

Body Galvanized steel

CONNECTIONS

To the cylinder Via mounting key

ADAPTABILITY

To all cylinders with a capacity of 5 -50 liters

DIFFERENT VERSIONS

Tulip cap, galvanized steel open on both sides.
 Closed cap, grey painted steel.
 Black tulip cap. Galvanized steel open on one side.
 Other colors and brands customizable on request.

SAFETY

Fall test EN ISO 11117

ACCESSORY DEVICE

Mounting key

Steel protective cap for valves to be applied to cylinders from 5 to 50 liters.
 Key for mounting the protection.



Code	Description
CO.100.18100	FULL ROUND IRON CAP
CO.100.18103	CAPPELOTTO TULIP ACC. ZINC. AP.2LA
CO.100.18104	TULIP CAP C/VITE ACC. ZINC. AP.2LA

ABS TULIP CAP FOR CYLINDERS

Series DCAPP



REFERENCE TECHNICAL STANDARDS

EN ISO 11117

TECHNICAL FEATURES

MATERIALS

Body

ABS

CONNECTIONS

To the cylinders

through thread

ADAPTABILITY

To all cylinders with a 0,5-14lt capacity

VERSIONS

Black version

(series)

Coloured version (white, blue, light blue, yellow, red)

SAFETY

Fall test

EN ISO 11117

ABS cap in accordance with EN ISO 11117 for all cylinders with a 0,5-14lt capacity.

ACCESSORY DEVICES

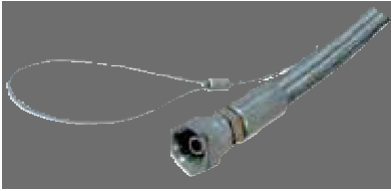
Lock ring nut for caps



Code	Description
CO.100.18105	BLACK TULIP PLASTIC CAP
CO.100.18106	WHITE TULIP PLASTIC CAP
CO.100.18107	BLUE TULIP PLASTIC CAP
CO.100.18108	ORANGE TULIP PLASTIC CAP
CO.100.18109	LIGHT BLUE TULIP PLASTIC CAP
CO.100.18110	CHALICE COVER in RED ABS
2107A	CYLINDER RING NUT Ø TO SIZE FOR COP. TULIP
2107	CYLINDER RING NUT Ø 24 FOR COP. TULIP

TECHNICAL GAS FLEXIBLE HOSE

Series DFL



These hoses are specifically made for the high pressure compressed gas sector.

The shape of the connecting pipes requires the use of brass fittings specific for the use.

TECHNICAL FEATURES

PERFORMANCE

Gas	High pressure compressed gas
Operating temperature	-60° C +260°C
Minimum curve radio	35
Max working pressure	400 bar
Minimum burst pressure	1600 bar
Internal diameter	6,5 mm
External diameter	12,5 mm
Safety factor	more than 1:4 (working pressure/burst pressure)

MATERIALS

Underlayer	- Smooth PTFE extruded and sintered without high thickness joints.
Cover	- High resistance treated stainless steel AISI 304 braid.
Reinforcement	Kevlar braided cord
Hemming	- Hoses for oxygen use with 1/4" g. nut AISI304, brass ogive
	- Hoses for different gases with 1/4" g. nut AISI304 ogive

CONNECTIONS

Inlet	1/4" G. F. Dx
Outlet	1/4" G. F. Dx

DIMENSIONS

Dimensions:

- 500 mm (without safety cord)
- 1000/1500/2000 mm (with safety cord)

ACCESSORY DEVICES

Specific brass fitting for hoses

SAFETY DEVICES

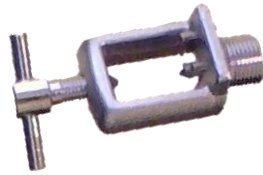
Integrated anti-swing safety cord

Use for emptying containers is prohibited for oxygen use.

Code	Description	Inlet	outlet	Gas
DFLGV0105	FLEXIBLE LG.50X VARIOUS GAS	G 1/4	G 1/4	0,0
DFLGV0110	FLEXIBLE LG.100X VARIOUS GASES	G 1/4	G 1/4	0,0
DFLGV0115	FLEXIBLE LG.150X VARIOUS GAS	G 1/4	G 1/4	0,0
DFLGV0120	FLEXIBLE LG.200X VARIOUS GASES	G 1/4	G 1/4	0,0
DFLO20005	FLEXIBLE 1/4" LG.50X O2	G 1/4	G 1/4	O2
DFLO20010	FLEXIBLE 1/4" LG.100X O2 WITH SAFETY CABLE	G 1/4	G 1/4	O2
DFLO20015	FLEXIBLE 1/4" LG.150X O2 WITH SAFETY CABLE	G 1/4	G 1/4	O2
DFLO20020	FLEXIBLE 1/4" LG.200X O2 WITH SAFETY CABLE	G 1/4	G 1/4	O2
DFLO20030	FLEXIBLE 1/4" LG.300X O2	G 1/4	G 1/4	O2

CHROME FITTINGS FOR TECHNICAL GAS

Series DCODOLO



Fittings in chromed brass for gas



TECHNICAL FEATURES

MATERIALS

Body

Brass 58

CONNECTIONS

Shank 1/4" G. M
Hex nut UNI 11144/2 Oxygen
UNI 11144/5 Nitrogen
UNI 11144/8 Argon
UNI 11144/6 Aria
UNI 11144/1H Hydrogen

DIMENSIONS

Length

- 45/60/45 mm (shank)
- 22/27/28/22 mm (nut)

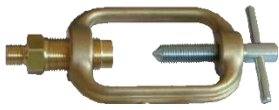
ACCESSORY DEVICES

Gaskets

Code	Description	Inlet	Outlet	Gas
9324CR	SET SHANK UNI 2 O2 CO2 G ¼ MEDIO CHROMED	G ¼	UNI 2	O2 CO2
9327CR	SET SHANK UNI 5 N2 G ¼ D MEDIO CHROMED	G ¼	UNI 5	N2
9328CR	SHANK SET UNI 8 AR-HE G ¼ D MEDIUM CHROMED	G ¼	UNI 8	AR-HE
9329CR	SET SHANK UNI 1H H2 G ¼ D CHROMED	G ¼	UNI 1H	H2
9330CR	SET SHANK UNI 6 ARIA G ¼ CHROMED	G ¼	UNI 6	ARIA
9336	SET SHANK UNI 1CO2 MED G ¼ CHROMED	G ¼	UNI 10	CO2 MED
9332	SHANK SET DIN 477 NR 9 O2 G ¼ D	G ¼	DIN 9	O2
CO.503.10834	PIN INDEX ISO 407 N2 G ¼ CHROMED	Pin Index	G1/4	N2
CO.503.10835	PIN INDEX ISO 407 N2O G ¼ CHROMED	Pin Index	G1/4	N2O
CO.503.10836	PIN INDEX ISO 407 O2 G ¼ CHROMED	Pin Index	G1/4	O2
CO.503.10836A	PIN INDEX ISO 407 O2 21,7 CHROMED	Pin Index	21,70	O2
CO.503.10836B	PIN INDEX ISO 407 O2 3/4G CHROMED	Pin Index	G3/4	O2
CO.503.10837	PIN INDEX ISO 407 CO2 G ¼ CHROMED	Pin Index	G1/4	CO2
CO.503.10838	PIN INDEX ISO 407 ARIA G ¼ CHROMED	Pin Index	G1/4	ARIA
CO.503.10839	PIN INDEX ISO 407 AR-HE G ¼ CHROMED	Pin Index	G1/4	AR-HE

FITTINGS FOR TECHNICAL GAS

Series DCODOLO



Brass gas fittings



TECHNICAL FEATURES

MATERIALS

Body

Brass 58

CONNECTIONS

Shank

1/4" G. M

Hex nut

UNI 11144/2 Oxygen

UNI 11144/5 Nitrogen

UNI 11144/8 Argon

UNI 11144/6 Air

UNI 11144/1H Hydrogen

UNI11144/7S Acetylene braket

NF E 29-658 French acetylene

DIMENSIONS

Length

- 45/60/45 mm (shank)
- 22/27/28/22 mm (nut)

ACCESSORY DEVICES

Gaskets

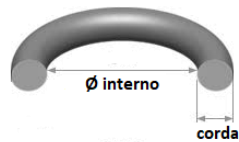
Degreasing treatment for all fittings

Code	Description	Inlet	outlet	Gas
9322	SHANK SET NF E 29-65A H C2H2 G ¼ D LONG	G ¼	NF A H	C2H2
9323	SHANK SET NF E 29-65B O2 G ¼ D LONG	G ¼	NF B	O2
9324	SHANK SET UNI 2 O2 CO2 G ¼ D LONG	G ¼	UNI 2	O2 CO2
9327	SHANK SET UNI 5 N2 G ¼ D LONG	G ¼	UNI 5	N2
9328	SHANK SET UNI 8 AR-HE G ¼ D LONG	G ¼	UNI 8	AR-HE
9329	SHANK SET UNI 1H H2 G ¼ D	G ¼	UNI 1H	H2
9330	SHANK SET UNI 6 ARIA G ¼ D MEDIUM	G ¼	UNI 6	ARIA
9322M	SET SHANK NF E 29-65A H C2H2 G ¼ D LUNGO	G ¼	NF AH	C2H2
9323M	SET SHANK NF E 29-65B O2 G ¼	G ¼	NF B	O2
9324M	SET SHANK UNI 2 O2 CO2 G ¼ MG LUNGO	G ¼	UNI 2	O2 CO2
9327M	SET SHANK UNI 5 N2 G ¼ M LUNGO	G ¼	UNI 5	N2
9328M	SET SHANK UNI 8 AR-HE G ¼ LUNGO	G ¼	UNI 8	AR-HE
9329M	SET SHANK UNI 1H H2 G ¼	G ¼	UNI 1H	H2
9330M	SET SHANK UNI 6 ARIA G ¼ M LUNGO	G ¼	UNI 6	ARIA
9341M	SET SHANK UNI 1HX N2G ¼ M MEDIO	G ¼	UNI 9	N2O
9345M	SET SHANK UNI 1H GPL G ¼ M MEDIO	G ¼	UNI 1H	GPL
9346M	SET SHANK UNI 1H H2 G ¼	G ¼	UNI 1H	H2
9328	SHANK SET UNI 8 AR-HE G ¼ D LONG	G ¼	UNI 8	AR-HE
9329	SHANK SET UNI 1H H2 G ¼ D	G ¼	UNI 1H	H2
9330	SHANK SET UNI 6 ARIA G ¼ D MEDIUM	G ¼	UNI 6	ARIA

TROLLEY FOR CYLINDERS



Code	Description
CO.100.18052	TROLLEY FOR CYLINDER L.5/7
CO.100.18053	TROLLEY FOR CYLINDER L.10/14
CO.100.18055	TROLLEY FOR CYLINDER L.14
CO.100.18059	TROLLEY FOR CYLINDER L.27



O-RINGS

Code	Description	Ø inside	Thickness
OR000E	O-RING 00EPDM 1,42X1,52	1,42	1,52
OR101E	O-RING OR101 EPDM	2,90	1,78
OR101V	O-RING OR101 VITON	2,90	1,78
OR103E	O-RING OR103 EPDM	4,48	1,78
OR103N	O-RING OR103 NITRILE	4,48	1,78
OR103V	O-RING OR103 VITON	4,48	1,78
OR104E	O-RING OR104 EPDM	5,28	1,78
OR104EPDM	O-RING OR104 EPDM	5,28	1,78
OR104N	O-RING OR104 NITRILE	5,28	1,78
OR104V	O-RING OR104 VITON	5,28	1,78
OR5.6X1.8N	OR5.6X1.8 IN NITRILE	0,00	0,00
OR105E	O-RING OR105 EPDM	6,07	1,78
OR105ET	O-RING OR105 ETILENE PROPILENE	6,07	1,78
OR105N	O-RING OR105 NITRILE	6,07	1,78
OR105N90	O-RING OR105 NITRILE 9SHORE	6,07	1,78
OR105V	O-RING OR105 VITON 9SH VERDE	6,07	1,78
OR106E	O-RING OR106 EPDM	6,75	1,78
OR106N	O-RING OR106 NITRILE	6,75	1,78
OR106V	O-RING OR106 VITON NERO	6,75	1,78
OR107E	O-RING OR107 EPDM	7,65	1,78
OR107N	O-RING OR107 NITRILE 9SH	7,65	1,78
OR107V	O-RING OR107 VITON	7,65	1,78
OR108E	O-RING OR108 ETILENE-PROPILENE	8,73	1,78
OR108N	O-RING OR108 NITRILE 9SH	8,73	1,78
OR108V	O-RING OR108 VITON	8,73	1,78
OR110E	O-RING OR11EPDM	9,25	1,78
OR110N	O-RING OR11NITRILE 9SH	9,25	1,78
OR110V	O-RING OR11VITON	9,25	1,78
OR113E	O-RING OR113 ETILENE PROPILENE	10,77	2,62
OR113N	O-RING OR113 NITRILE	10,77	2,62
OR113V	O-RING OR113 VITON	10,77	2,62
OR113VRIC	O-RING OR113 RICARICA VITON	10,77	2,62
OR116E	O-RING OR116 EPDM 8SH	12,37	2,62
OR116N	O-RING OR116 NITRILE	12,37	2,62
OR116N90	O-RING OR116 NITRILE 9SHORE	12,37	2,62
OR116V	O-RING OR116 VITON	12,37	2,62
OR122N	O-RING OR122 NITRILE 3068	17,13	2,62
OR123N	O-RING OR123 NITRILE 9SH	17,86	2,62
OR123V	O-RING OR123 VITON	17,86	2,62
OR25X4N	OR 25X4 NITRILE	25,00	4,00
OR3131V	OR3131 VITON 2,62X32,99X38,23	32,99	2,62
ORAN19E	O-RING AN19 EPDM 410 9SH	24,99	3,53
ORAN19N	O-RING AN19 NITRILE 410 9SH	24,99	3,53
ORAN19V	O-RING AN19 VITON 4109SH	24,99	3,53
ORAN20N	O-RING AN2NITRILE (4106)	26,57	3,53
ORMS14E	O-RING MS14 EPDM 2059SH.	12,42	1,78
ORMS14N	O-RING MS14 NITRILE 2059SHORE	12,42	1,78
ORMS14V	O-RING MS14 VITON 2059SH.	12,42	1,78
ORMS15N	O-RING MS15 NITRILE 2056 9SH	14,00	1,78
ORMS17E	O-RING MS17 NEPDM 2068	17,70	1,78
ORMS17N	O-RING MS17 NITRILE 2068	17,70	1,78
ORMS19E	O-RING MS19 EPDM 2081	20,35	1,78
ORMS19N	O-RING MS19 NITRILE 2081	20,35	1,78

*Np = net price

GENERAL TERMS AND CONDITIONS OF SALE

1.0 Contracts:

- 1.1 Each sales contract is always intended to be stipulated and finalised at the headquarters of the Seller, regardless of the place where the commission is given. All the following conditions, none excluded or excepted, are considered implicitly accepted with the placing of the order, even if the customer's order forms contain clauses different from those reported here.
- 1.2 The minimum order amount must be € 150,00.

2.0 Delivery:

- 2.1 The delivery terms indicated in the order are indicative and not binding; will be respected subject to the availability of the materials necessary for production and anything else relating to it. Any and all changes made by the customer to the delivery terms after the order are not valid.
- 2.2 Delays due to fires, strikes, delays in receiving goods, export and import constraints or other causes of force majeure, authorize the Seller to move the delivery terms, relieving it of any liability. Even in the event of such delays, the buyer always has the obligation to proceed with the total withdrawal of the quantity of goods ordered and committed.
- 2.3 In no case and for no reason is the selling company required to pay compensation of any kind for any direct or indirect damage due to delivery delays and this is because the terms indicated and accepted at the time of placing the order are not binding.
- 2.4 If the shipment or delivery takes place after the deadline established by order of the customer, the costs of storing the goods in the warehouse will be due to the seller, calculated at the rate of 1.5% of the goods invoice amount for each month of stock.

3.0 Shipping and returns:

- 3.1 The goods are intended to be supplied ex warehouse of departure unless otherwise agreed. They always travel on behalf and at the risk of the customer even in the case of agreed home delivery. The supply will be considered as having taken place with the delivery of the goods to the carrier indicated by the customer or, in the absence of timely notification, chosen by the Seller. All goods will be shipped by the Seller without insurance; if it is requested, any resulting costs will be borne by the customer.
- 3.2 Complaints relating to the state of the packaging, quantity or number of pieces must be declared on the delivery note and countersigned by the carrier, the company must be informed, via email, within seven days of receipt of the goods under penalty of forfeiture of any possible right of refund or replacement.
- 3.3 Returns of goods are not permitted unless after a specific agreement with the Seller. Any returned goods always travel at the exclusive risk of the customer and will only be accepted carriage paid.
- 3.4 Complaints or any other dispute that may arise as a consequence of the purchase-sale relationships regulated by these conditions do not give the customer the right to suspend or delay payments.

4.0 Prices

- 4.1 List prices may be varied or changed without any obligation to give prior notice to the client. Prices and all other conditions relating to an order are not binding for any subsequent orders of the same items. Any different agreements do not constitute a derogation from this principle and must be considered limited to the particular case. The prices indicated on the order or in any case agreed upon refer to goods delivered ex-warehouse and shall be borne by the purchaser, in addition to transport costs, packaging, duties, customs tariffs, insurance, special duties, taxes of any kind and in general all tax and ancillary charges of the contract. The prices are subject to revision in the event of changes in the exchange rate.

5.0 Terms of Payment

- 5.1 Payments shall be made under the conditions set forth in the order exclusively to the cash office of the Seller, the transmission of the sums being at the Purchaser's risk. The possible issuing of drafts constitutes a unilateral initiative of the Seller for a more convenient form of payment and does not imply any shift of territorial jurisdiction. Any discounts granted refer only to the amounts of the goods. No discounts or rebates not agreed upon and/or forfeited shall be recognized.
- 5.2 In the event of delayed payment, the annual interest shall automatically be charged on the basis of the official discount rate plus 4 percentage points from the due date, without any need for a formal notice. This is without prejudice to the right of the manufacturer, in the event of payment arrears, to suspend any ongoing supply.

6.0 Warranty

- 6.1 The products are tested before shipment, are guaranteed in accordance with the technical documentation supplied and are provided with the identification tag, affixed by the manufacturer which cannot be removed under any circumstances.
- 6.2 The warranty is twelve months from the date of collection of the products from the Seller and is limited to the replacement, ex Seller's warehouse, of those parts whose defects will be ascertained.
- 6.3 Parts that are normally subject to wear and tear are excluded from the guarantee and the guarantee in any case lapses if there has been use that does not comply with the indications in the catalogues or instruction sheets, contamination with improper materials, poor installation or maintenance, or mechanical breakage, modification or tampering.
- 6.4 The terms for the return of materials acknowledged to be defective and/or in need of repair shall be agreed with the purchaser; however, they shall be understood as identifying the same as the delivery terms.
- 6.5 In the event of a partial or total recall of a potentially defective batch, the costs associated with tracing the product are excluded from the reimbursement, and remain the responsibility of the purchaser.
- 6.6 If the purchaser's complaint is acknowledged to be justified, the seller is entitled to repair or replace the parts found to be defective.
- 6.7 Interventions for replacement under warranty shall be carried out ex vendor's warehouse and deliveries shall be agreed in advance with the same.
- 6.8 Replacement of goods is not permitted unless specifically agreed with the Seller.
- 6.9 Compensation for any damage to the purchaser shall not exceed the invoice price of the disputed products.
- 6.10 This guarantee excludes all other possible liability of the Seller in connection with the delivered products.
- 6.11 In particular, the purchaser may not make any other claims for damages, price reductions, termination of the contract or suspension of payments.
- 6.12 If payments are suspended, the guarantee shall be automatically suspended until payments are regularized.
- 6.13 Under no circumstances shall the Seller be liable for indirect or consequential damage.

7.0 Disputes

- 7.1 The place of jurisdiction for any dispute shall be Milan

"Pursuant to articles 1341, 1342 and s.s. of the Italian Civil Code, the following clauses are specifically approved: Deliveries 2.3, Shipment and returns 3.1 - 3.4 - Payment conditions 5.2 - Guarantees 6.2 - Disputes 7.1"

SAN-O-SUB MBB SRL IS A MECHANICAL COMPANY WITH PRODUCTION HEADQUARTERS IN ITALY, FOUNDED IN MILAN IN 1934 FOR THE PRODUCTION OF INDUSTRIAL REDUCERS, VALVES AND MEDICAL PRODUCTS.



Info: +39 02 4452075
Sales: +39 02 4454057



Via Leonardo da Vinci 168 -
20090 Trezzano sul Naviglio (Milano)



Info: sanosub@sanosub.com